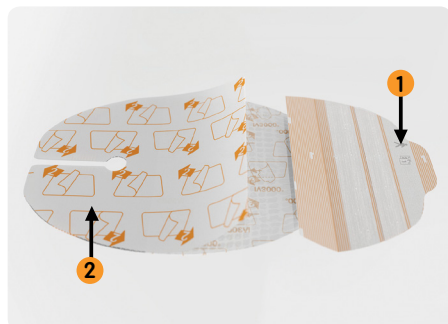


IV3000 Application

IV3000 Ported Dressing 9cm x 12cm

Suitable for dressing central line catheters

Step A

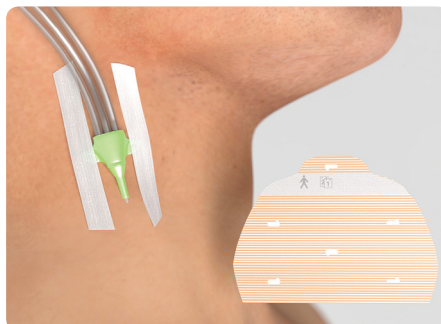


Clean and thoroughly dry the application area in accordance with local protocols.

First remove section 1 from the rounded end of the dressing.

This contains two strips and a date label.

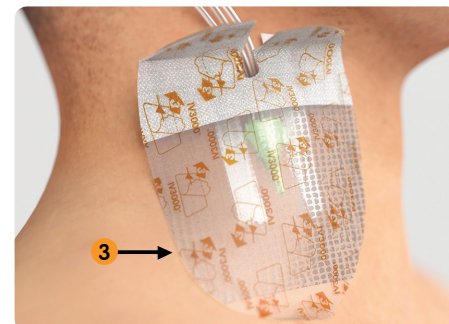
Step B



The sterile strips can be used on the catheter wings or body for improved security, to secure tubing or to stabilize catheter lumens.

Remove the backing paper marked 2

Step C

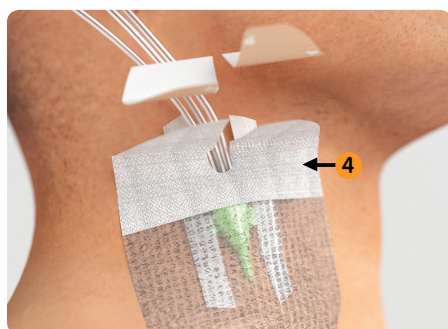


Position the dressing over the cannula site, ensuring that the ported area is aligned with the catheter.

Smooth down the edges of the dressing.

Using the tab, gently peel off the top backing paper marked 3

Step D

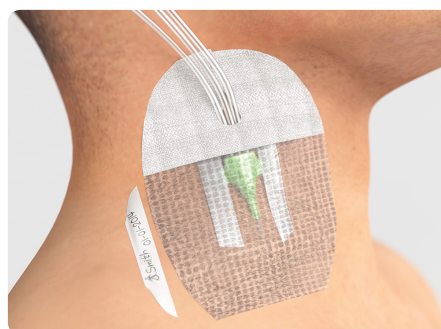


Arrange the ported area around the lumens.

Remove the backing papers marked 4 from the non-woven sections.

The non-woven sections can be gently pulled together and overlapped to ensure the catheter is well secured.

Step E



Mould the film around the catheter, ensuring that the dressing is secure and the patient is comfortable

Finally, after recording relevant information on the date label, place the date label from section 1 on the skin or the dressing (without obscuring the view of the catheter site).

Removal

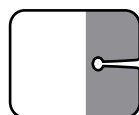


Gently peel back the non-woven wings to the point at which they reach the film section.

Then take a corner of the film and stretch it parallel to the patient's skin while stabilizing the patient's skin and catheter with the other hand.

Release and repeat the process.

Ordering codes



Product code	Dressing size	Quantity per carton	Recommended indication
66004011	5cm x 6cm	100	Paediatric
4006	7cm x 9cm	100	Peripheral
66004009	9cm x 12cm (Oval)	50	Central
66800512	11cm x 14cm	25	PICC

Please consult product labels and inserts for any indications, contraindications, hazards, warnings, cautions and instructions for use.

Smith & Nephew Pty Ltd
Australia
T +61 2 9857 3999 F +61 2 9857 3900
www.smith-nephew.com/australia
Customer Service
T 13 13 60 F 1800 671 000

Smith & Nephew Ltd
New Zealand
T +64 9 820 2840 F +64 9 820 2841
www.smith-nephew.com/new-zealand
Customer Service
T 0800 657 799 (Surgical) T 0800 807 663 (Wound)