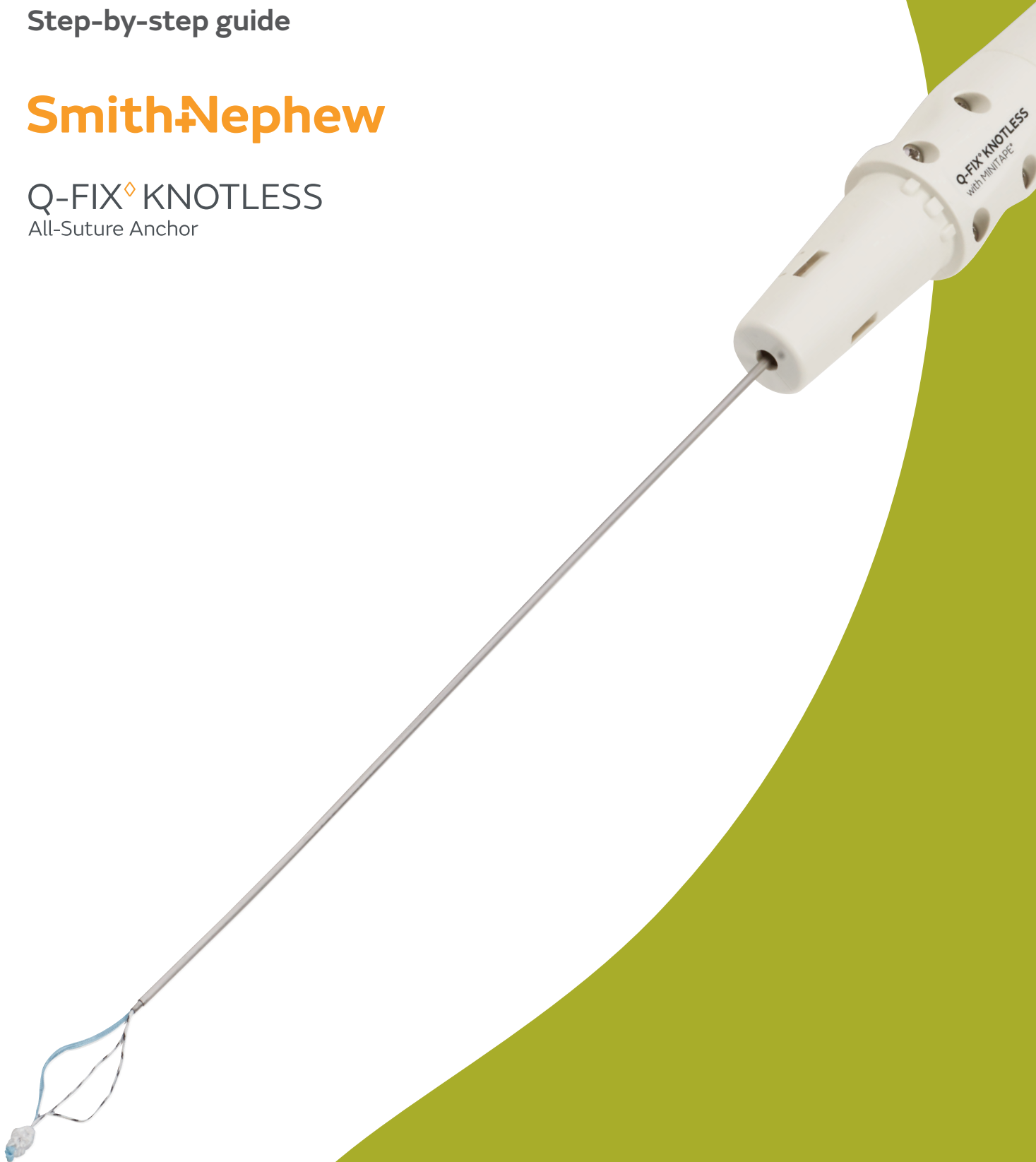


+ Hip Labral Repair

Step-by-step guide

Smith+Nephew

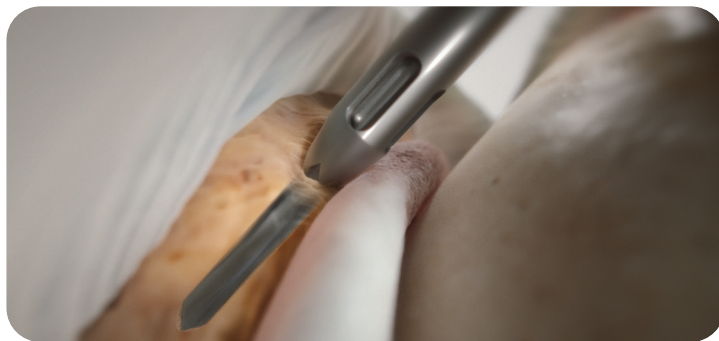
Q-FIX[◇] KNOTLESS
All-Suture Anchor



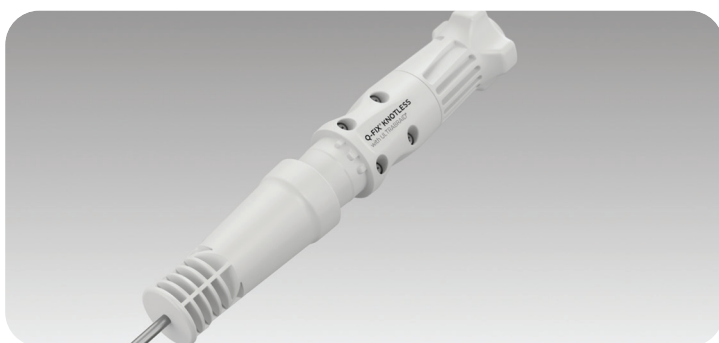
Q-FIX KNOTLESS All-Suture Anchor Labral Repair



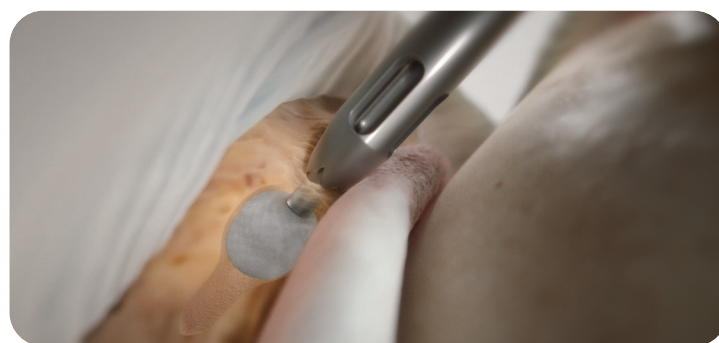
1. Prepare the acetabulum using the 4.5mm abrader burr and then insert the appropriate drill guide with obturator through the skin incision. Once the drill guide is positioned at the desired implant location remove the obturator from the drill guide. There are straight and curved guide configurations available.



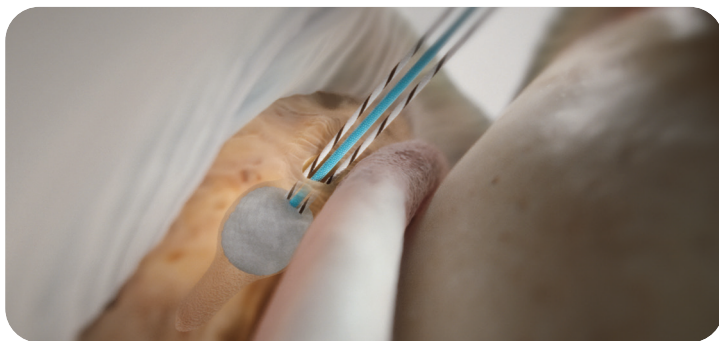
2. Insert the appropriate drill into the drill guide and drill the bone hole. Advance the drill until the drill bottoms in the drill guide. Cycling the drill for three passes through the drill guide is generally adequate to clear bone debris from the drill hole.



3. Remove the drill and insert the implant through the drill guide into the bone hole. Be sure that the implant inserter is fully engaged with the drill guide throughout the deployment of the anchor.



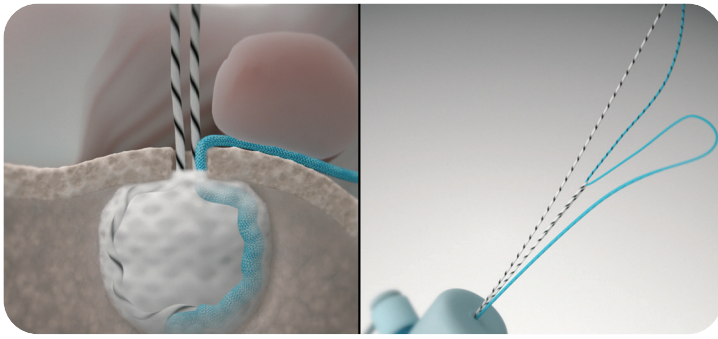
4. Rotate the activation knob at the proximal end of the implant inserter clockwise to deploy the implant. Rotate the knob until a hard stop is reached and the suture cleat is exposed at the proximal end of the inserter.



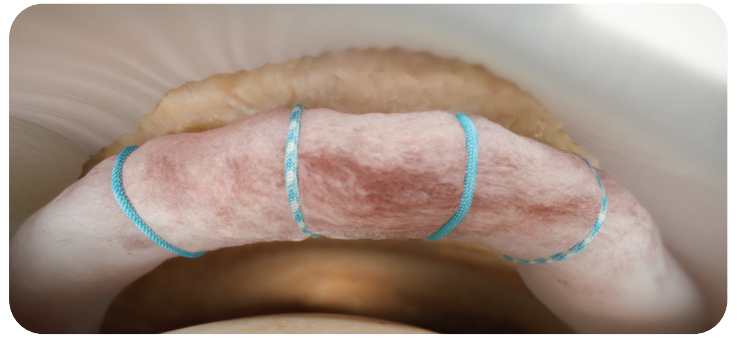
5. Release the sutures from the cleat and remove the inserter and drill guide. **NOTE:** There is a single strand of blue repair suture and the co-braid transfer suture has a looped and non-looped end.



6. Using the ACCU-PASS[®] DIRECT CRESCENT XL pass the repair suture around the tissue and retrieve with a looped grasper. **NOTE:** Alternatively, if inversion of the hip labrum is desired, the looped end of the transfer suture can be passed through the labrum instead of the repair suture.



7. Pass the distal most end of the repair suture strand through the looped end of the transfer suture up to where the black suture markings end. Pull on the non-looped end of the transfer suture to shuttle the repair suture through the implant. **NOTE:** The transfer suture will disengage from the implant and can be discarded.



8. Pull on the repair suture strand to tension the repair. Once final tension is achieved, cut the suture tail.

Repeat Steps 1–8 for subsequent anchors.

Ordering information

Q-FIX° KNOTLESS All-Suture Anchors*		Q-FIX Reusable Accessories	
Reference #	Description	Reference #	Description
72205884	Q-FIX KNOTLESS All-Suture Anchor, 1.8mm, with one MINITAPE° suture, blue	72290032	Q-FIX All-Suture Anchor Drill Guide, fish mouth tip, 1.8mm, nonsterile, reusable
72205885	Q-FIX KNOTLESS All-Suture Anchor, 1.8mm, with one MINITAPE suture, co-braid blue	72290034	Q-FIX All-Suture Anchor Drill Guide XL, crown tip, 1.8mm, nonsterile, reusable
72205882	Q-FIX KNOTLESS All-Suture Anchor, 1.8mm, with one ULTRABRAID° suture, blue	72290033	Q-FIX All-Suture Anchor Obturator, 1.8mm, nonsterile, reusable
72205883	Q-FIX KNOTLESS All-Suture Anchor, 1.8mm, with one ULTRABRAID suture, co-braid blue	72290120	Q-FIX All-Suture Anchor Curved Drill Guide, crown tip, 1.8mm, nonsterile, reusable
Q-FIX Disposable Kits		72290119	Q-FIX All-Suture Anchor Curved Drill Guide XL, crown tip, 1.8mm, nonsterile, reusable
25-1811	Q-FIX All-Suture Anchor Disposable Kit XL, 1.8mm, includes drill, crown tip drill guide and sharp obturator	Q-FIX Disposable Accessories	
ACCU-PASS° DIRECT		72290030	Q-FIX All-Suture Anchor Twist Drill, 1.8mm, sterile, disposable
25-2005	ACCU-PASS DIRECT CRESCENT XL	72290118	Q-FIX All-Suture Anchor Flexible Drill, 1.8mm, sterile, disposable

* Legal manufacturer is Smith & Nephew, Inc. 150 Minuteman Road, Andover, MA 01810 USA

Products may not be available in all markets because product availability is subject to the regulatory and/or medical practices in individual markets. Please contact your Smith+Nephew representative or distributor if you have questions about the availability of Smith+Nephew products in your area. For detailed product information, including indications for use, contraindications, precautions and warnings, please consult the product's applicable Instructions for Use (IFU) prior to use.

The following technique is for informational and educational purposes only. It is not intended to serve as medical advice. It is the responsibility of treating physicians to determine and utilize the appropriate products and techniques according to their own clinical judgment for each of their patients.

Additional instruction

To order the instruments used in this technique, call **+1 800 343 5717** in the U.S. or contact an authorized Smith+Nephew representative. Prior to performing this technique, consult the Instructions for Use documentation provided with individual components – including indications, contraindications, warnings, cautions and instructions. Caution: U.S. Federal law restricts this device to sale by or on the order of a physician.

Learn more at smith-nephew.com



Smith & Nephew, Inc.
150 Minuteman Road
Andover, MA 01810
USA

www.smith-nephew.com
T +978 749 1000
US Customer Service:
+1 800 343 5717

Manufactured by:
ArthroCare Corporation
7000 West William
Cannon Drive
Austin, TX 78735, USA

°Trademark of Smith+Nephew.
All trademarks acknowledged.
©2024 Smith+Nephew. All rights reserved. 42653 V1 11/24