

WARNING: Review all RENASYS Negative Pressure Wound Therapy System (NPWT) safety information prior to beginning wound preparation.

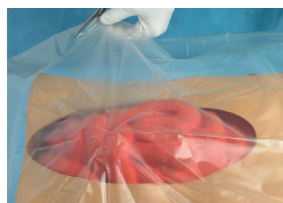
Ensure that sufficient haemostasis has been achieved prior to applying the RENASYS AB Abdominal Dressing (refer to 'warnings' section in the RENASYS AB Abdominal Dressing Kit with Sort Port Instructions For Use (IFU)).

1. Eliminate any sharp edges or bone fragments from wound area (refer to 'precautions' section in the RENASYS AB Abdominal Dressing Kit with Sort Port IFU).
2. Ensure any areas of necrosis are appropriately debrided.
3. Irrigate abdominal wound as needed.
4. Clean and dry the periwound area.

Organ protection layer (OPL) application

WARNING: Protect vital structures such as bowel and abdominal organs at all times with the Organ Protection Layer (OPL) during therapy. Foam should never be placed in contact with exposed bowel, arteries, veins, organs, or nerves (refer to 'contraindications' section in the RENASYS AB Abdominal Dressing Kit with Sort Port IFU).

NOTE: Either side of the OPL may be applied to exposed organs. The OPL may be cut or folded to accommodate the specific needs of the patient.



1. Remove kit contents from pouch and prepare the OPL on a sterile field. If cutting the OPL to a different size, ensure that each piece removed has been disposed of properly, away from the open wound.



2. Gently position the OPL dressing evenly into the abdominal cavity, distributing the sides into both of the lateral paracolic gutters. Any excess material on the sides of the OPL may be folded back onto itself.

NOTE: Wet surgical gloves prior to applying the OPL to allow easier placement.



3. Ensure complete coverage of all exposed bowel in the abdominal cavity with the OPL, prior to filling the wound with foam.

Perforated foam application



1. Size the provided foam to the desired proportions along pre-scored perforations. Cutting the wound filler may be performed if desired. Do not cut the foam wound filler directly over the wound bed to avoid foam fragments from falling into the wound. Rub the edges of any cut foam, away from wound, to remove any loose fragments which may result. The foam should be placed directly over the OPL while maintaining contact with the margins of the wound.



2. Do not allow foam to contact intact skin without use of appropriate barrier, such as transparent film or a hydrocolloid.
3. Gently place perforated foam in the wound cavity over the OPL. Ensure that the foam is sized to fit loosely into the wound cavity and there is sufficient material up to the top surface of the abdominal wound. Do not under fill the wound. It may be necessary to stack pieces of foam in deep wounds depending on the wound profile. If multiple pieces of foam are needed, count and record the number of foam pieces used.

WARNING: Do not tightly pack or force foam into any areas of the wound.

Transparent film application

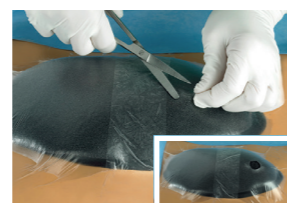


1. While holding the transparent film, expose one side of the adhesive backing by removing a single panel, and apply it to the foam.

Cover foam with transparent film, removing remaining adhesive panels to seal, as well as the remaining carrier panel. Film should extend at least 5cm/2in beyond wound margin and be securely anchored to periwound area to maintain a good seal.

NOTE: Overlap the edges of the transparent film by a minimum of 7.5cm/3in when using multiple pieces of transparent film.

NOTE: Avoid stretching or pulling the transparent film to minimize tension or trauma to the periwound skin.



2. Cut a circular opening (no less than 2cm³/₄in in diameter) in the centre of the film, over the wound filler. Remove any loose transparent film and dispose of away from the wound.

Apply RENASYS Soft Port



1. Remove the adhesive panel from the RENASYS Soft Port dressing, and align directly over the hole in the transparent film. Use gentle pressure to anchor the Soft Port to the transparent film.



2. Smooth the dressing down while removing the RENASYS Soft Port stabilisation frame.



3. Secure the RENASYS Soft Port to the patient according to your institutional protocol. Ensure the aeration disc, located near the orange quick click connector, is not covered or otherwise occluded by the method used to secure the Soft Port.



4. Ensure canister is installed correctly. Connect the RENASYS Soft Port to the canister tubing by pushing the orange quick click connectors together. An audible click indicates connection is secure.

Activate the RENASYS EZ PLUS, EZ MAX or RENASYS TOUCH pump on continuous mode beginning at 80mmHg, checking that the dressing has a good seal. The recommended pressure range is 80-120mmHg.

Please refer to your RENASYS pump manual for full operating instructions.

The finished dressing should be fully compressed, firm to the touch and leak-free. If required, adjust pressure setting to the desired level. Pressure setting is a clinical decision based on individual characteristics of the patient and wound. Some factors to consider are location of wound, volume of drainage and integrity of dressing seal.

For detailed product information, including indications for use, contraindications, effects, precautions, warnings, and important safety information, please consult product's IFU prior to use