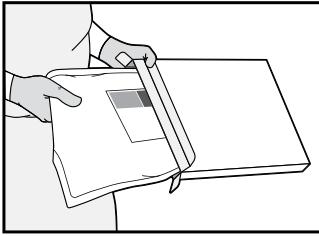
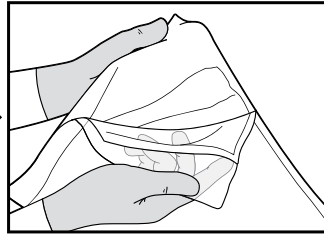


Quick set-up guide

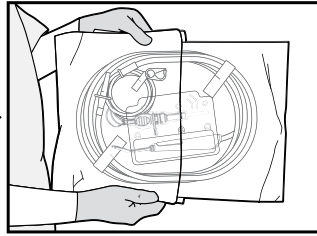
➔ READ LEFT TO RIGHT



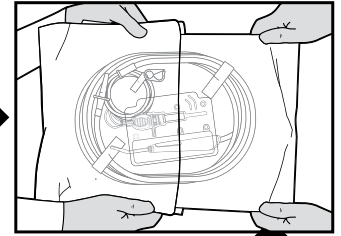
Remove handset from carton



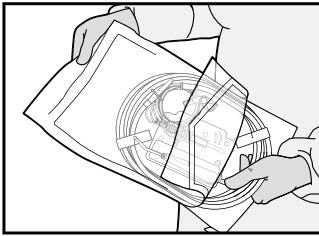
Open external pouch



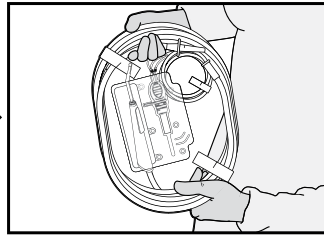
Prepare internal pouch for transfer



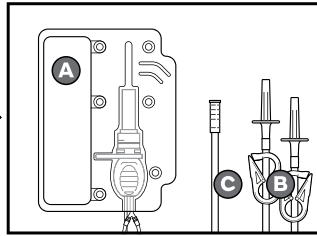
Transfer inner pouch to sterile field



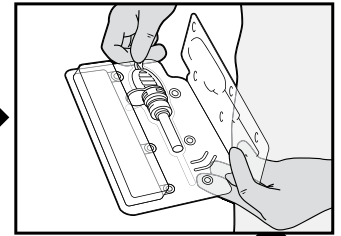
Remove device contents



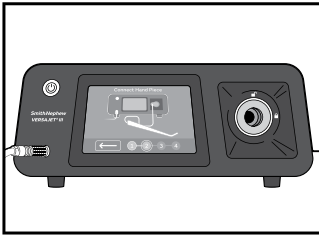
Prepare device. Transfer saline tube, evacuation tube and pump from sterile field



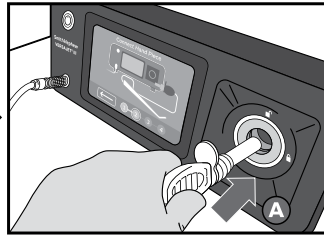
a. Handset pump cartridge
b. Dual saline spike
c. Evacuation line



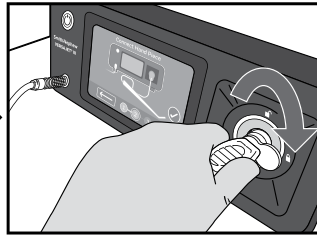
Remove pump cartridge from clam shell



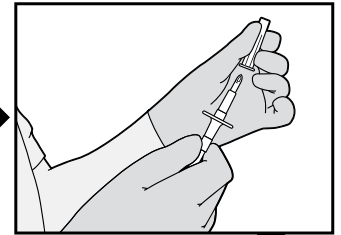
Plug in the foot pedal ensuring the red dots are aligned.



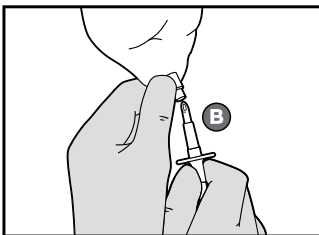
Insert pump cartridge into console



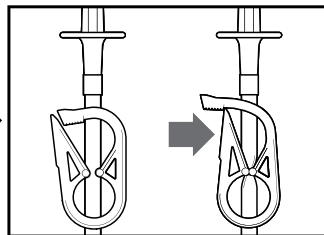
Turn right to 3 o'clock



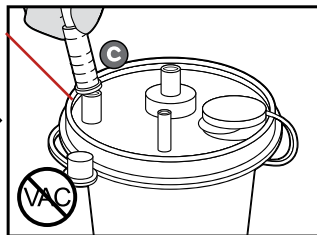
Remove the sterile cover from the bag spike



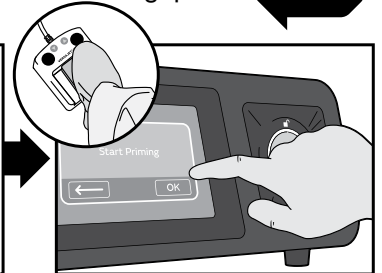
Insert into the saline supply bag. Repeat for the second bag if necessary.



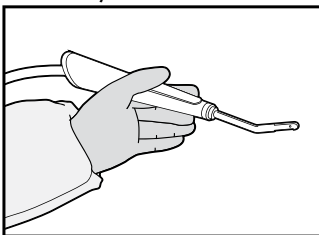
Clamp both saline spikes



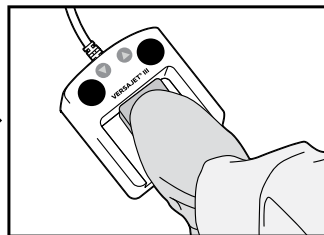
Attach evacuation tube to vented canister*



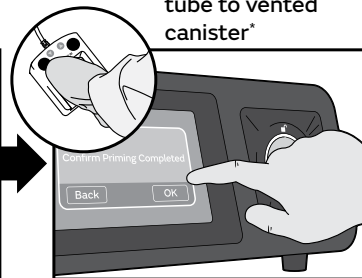
Press the "ok" button on the screen to complete the set-up.



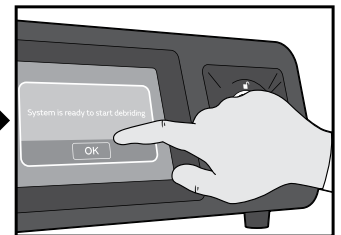
Safely hold handset



Depress foot pedal to prime



Release the foot pedal. Indicate that the priming is complete on the screen.



Once clicking "yes" on the screen priming is complete the system is ready for debridement.

*Use VERSAJET II setup guide as a reference

The decision to use Smith+Nephew products should be made by a healthcare professional, in line with applicable local protocols. For detailed product information, including indications for use, contraindications, precautions and warnings, please consult the product's applicable Instructions for Use (IFU) prior to use.