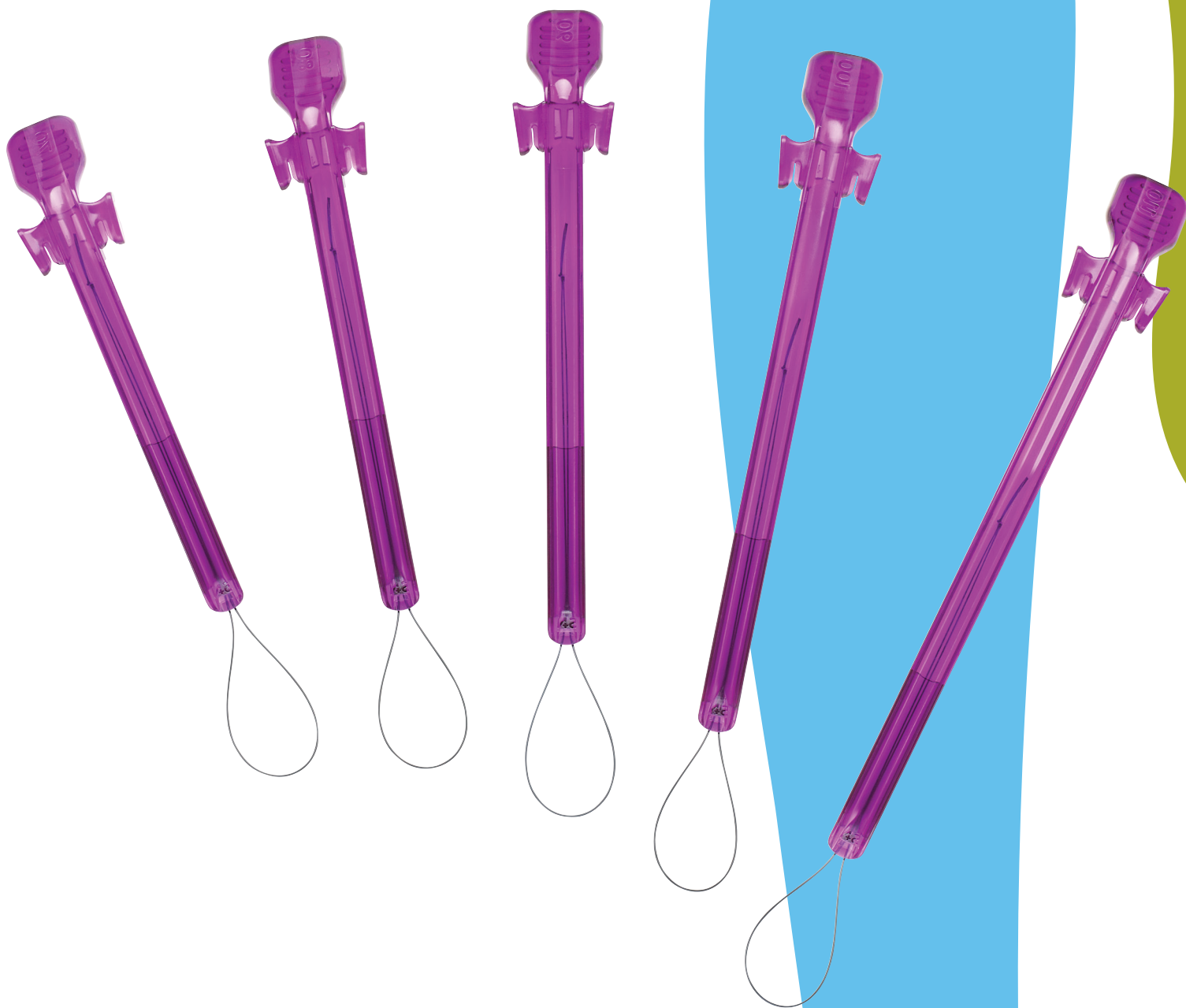
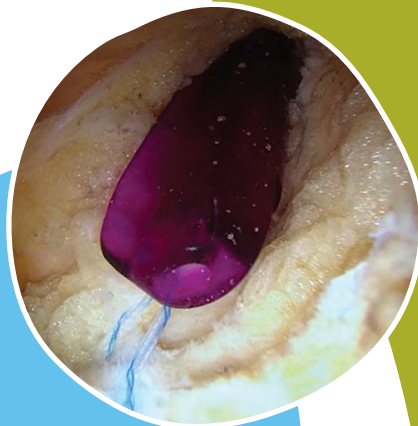


+ Hip labral repair

Step-by-step reference guide

Smith+Nephew

CAP-LIFT[◇]
Cannula



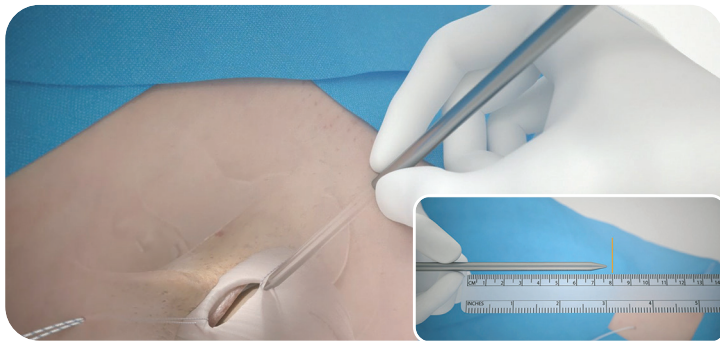
CAP-LIFT[®] Cannula Labral Repair



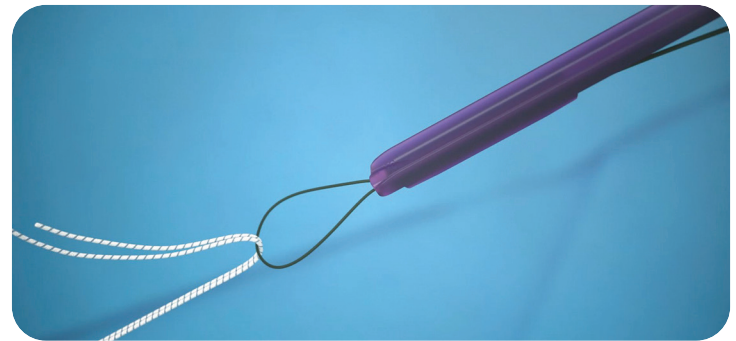
1. After portal setup, use the CAP-FIX Blade to make a centered capsulotomy between the acetabulum and femoral head.



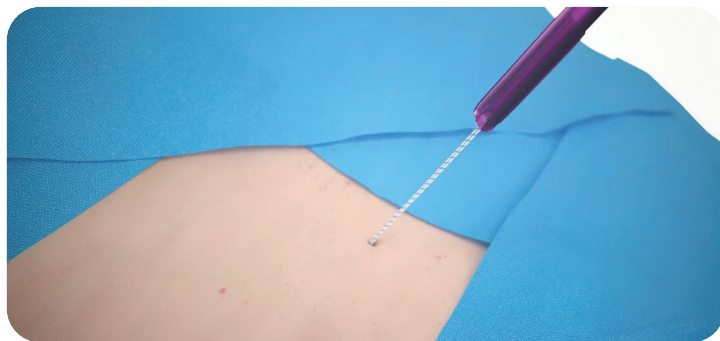
2. Place as many traction stitches as needed using the CAP-FIX Suture Passer. It is recommended to place at least two: one traction stitch from the mid-anterior portal (mMAP) and one from the anterolateral (AL) portal to secure a CAP-LIFT cannula to each side of the hip capsule. As an alternative, SPEED STITCH Suture Passer or other suture passers can be used.



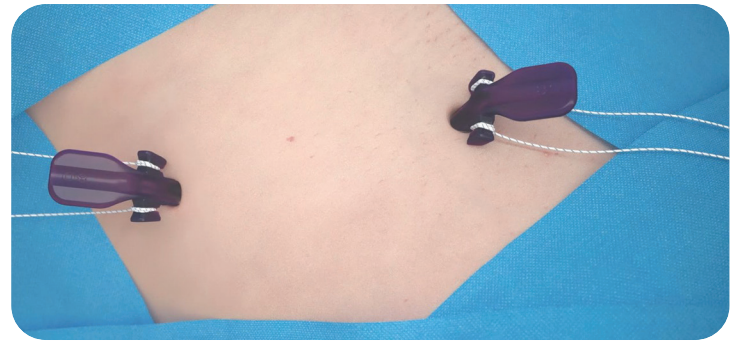
3. Ensure the portal is well developed and measure from above the capsule to the skin using a switching stick, then use a ruler to determine the appropriate CAP-LIFT cannula length.
NOTE: CAP-LIFT cannulas are available in: 70 cm, 80 cm, 90 cm, 100 cm, and 110 cm.



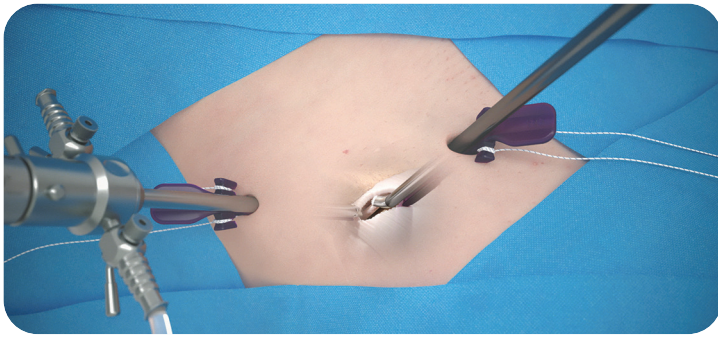
4. Insert the traction sutures into the monofilament loop, then pull the opposite end to thread the sutures fully through the cannula's back channel.



5. Insert the cannula by sliding it along the suture in the same direction as the portal keeping tension on the traction stitch while using the tab to assist with insertion. Additionally, a slight twisting motion can also help with advancement.



6. After positioning the cannula over the capsule, tension the suture and secure it around the suture cleats.



7. Repeat Steps 1-6 to place as many cannulas as needed. To maximize the benefits of the CAP-LIFT Cannula, a minimum of two cannulas per procedure is recommended

Optional Adjustments:

- For additional capsule elevation, place a snap behind the cannula, clip the sutures, and apply tension as needed.
- The level of traction can be adjusted at any time during the hip procedure. Simply release the suture and then secure it again.

Ordering information

CAP-LIFT [°] Cannula	
Reference	Description
72205889	CAP-LIFT Cannula, 70mm
72205912	CAP-LIFT Cannula, 80mm
72205890	CAP-LIFT Cannula, 90mm
72205913	CAP-LIFT Cannula, 100mm
72205891	CAP-LIFT Cannula, 110mm
Hip Pacs	
Reference	Description
72205318	CAP-FIX Blade, Straight, with Hip Pac
72205319	CAP-FIX Blade, Curved, with Hip Pac
7209874	Hip Pac Disposable
CAP-FIX [°] Blade	
Reference	Description
72205314	CAP-FIX Blade, Straight with Handle
72205315	CAP-FIX Blade, Curved with Handle
72205316	CAP-FIX Blade, Straight
72205317	CAP-FIX Blade, Curved
CAP-FIX [°] Suture Passer	
Reference	Description
72205683	CAP-FIX Suture Passer, 45°
72205684	CAP-FIX Suture Passer, 70°

Products may not be available in all markets because product availability is subject to the regulatory and/or medical practices in individual markets. Please contact your Smith+Nephew representative or distributor if you have questions about the availability of Smith+Nephew products in your area. For detailed product information, including indications for use, contraindications, precautions and warnings, please consult the product's applicable Instructions for Use (IFU) prior to use.

Learn more at smith-nephew.com

Smith & Nephew, Inc.
150 Minuteman Road
Andover, MA 01810
USA

www.smith-nephew.com
T +978 749 1000
US Customer Service:
+1 800 343 5717

[°]Trademark of Smith+Nephew.
All trademarks acknowledged.
©2025 Smith+Nephew. All rights reserved. 47198 V2 11/25