

**+** Go beyond  
the repair

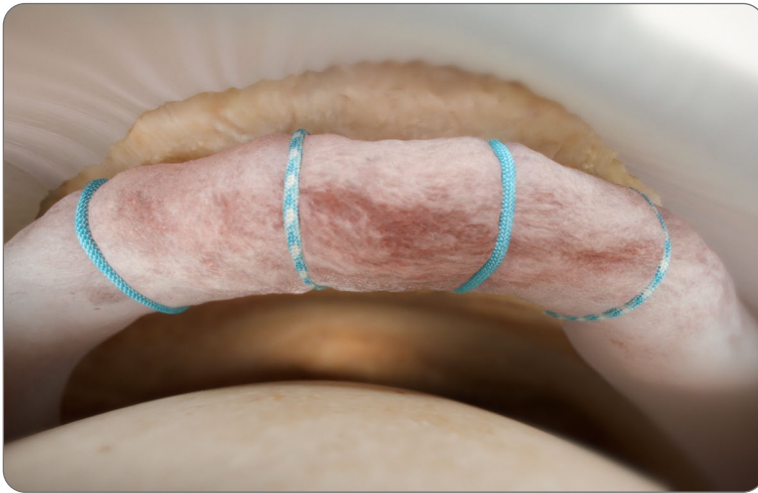
**Smith+Nephew**



**Q-FIX<sup>◇</sup> KNOTLESS**  
All-Suture Anchor

## + Q-FIX<sup>o</sup> KNOTLESS All-Suture Anchor

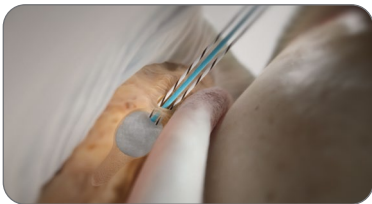
- **Designed** for controlled tensioning post deployment<sup>1</sup>
- **Suture lock feature** allows for best in class soft tissue security<sup>\*2</sup>



### Watch

Q-FIX KNOTLESS All-Suture Anchor  
Hip Labral Repair Animation

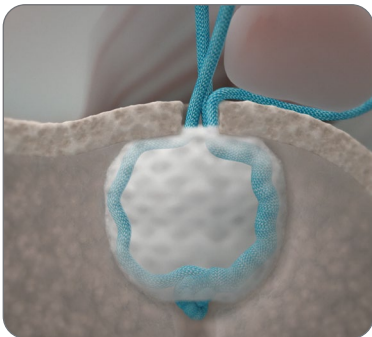
### Streamlined suture shuttling<sup>2</sup>



1. Deploy



2. Pass

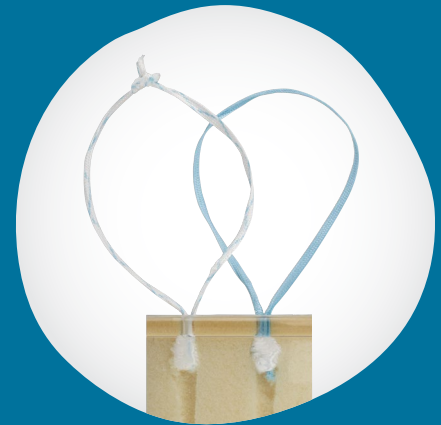


3. Shuttle



4. Tension & Suture Lock

Q-FIX KNOTLESS All-Suture Anchor  
+ Q-FIX 1.8 All-Suture Anchor  
have equivalent suture displacement  
when subjected to cyclic loading<sup>\*\*2</sup>



**NOTE:** Both a standard and inverted repair of the labrum is possible based on suture passing technique  
<sup>\*</sup>as compared to the competitive device in cyclic benchtop testing  
<sup>\*\*</sup>as compared in benchtop testing

## + Q-FIX<sup>®</sup> All-Suture Anchor Family

### Superior biomechanics

- The Q-FIX All-Suture Anchor Family provides market leading biomechanical performance <sup>\*2-8</sup>
  - Q-FIX anchors have 360° subcortical radial expansion leading to best-in class anchor fixation <sup>\*\*3-10</sup>
- Figure 1
- Provides the benefits of a small, soft anchor with the anchor fixation characteristics similar to or greater than traditional solid body anchors <sup>4, 7, 11, 12</sup>

### Consistent deployment

- Active deployment against the inserter shaft consistently sets the anchor to at least 140N; contributing to **high pull-out performance** and **low displacement during cyclic loading** <sup>\*\*\*3-5, 7, 9, 10, 17</sup>

### Curved instrumentation

The Curved Instrumentation has intuitive visual and tactile cues that facilitate drill guide positioning and anchor placement <sup>13</sup>

- The crescent-shaped laser mark indicates the orientation of the curvature
- The vertical laser mark indicates the trajectory of the drill bit

Q-FIX Curved Drill Guide can improve access to challenging hip anatomy. <sup>13</sup>

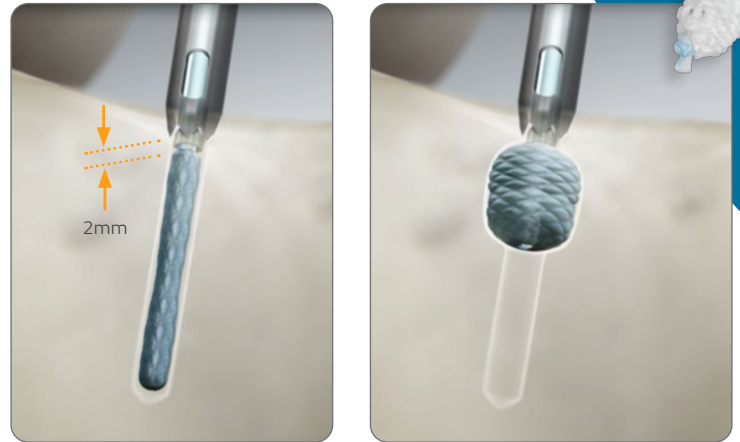


Figure 1

Inserter is 2mm below bone surface

Radial expanding deployment



Showcasing consistent active deployment across the Q-FIX All-Suture Anchor Family

\*as compared to competitive all-suture anchors in cyclic and fixation/pull-out benchtop testing

\*\*as compared to competitive devices in fixation/pull-out benchtop testing

\*\*\*as demonstrated in benchtop testing

## Versatile Offerings

The Q-FIX<sup>°</sup> All-Suture Anchor Family offers several options to meet the needs across orthopedic procedures or surgical preferences:

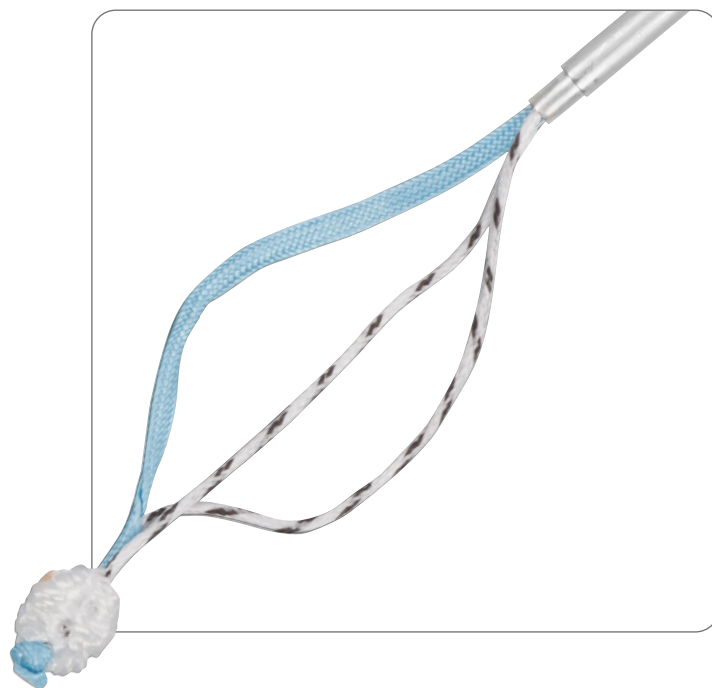
Repair construct	Q-FIX Anchor	Suture Type	# of Sutures
Knotless	Q-FIX KNOTLESS (1.8mm)	#2 Suture	Single loaded
		MINITAPE <sup>°</sup>	
Knotted	Q-FIX MINI (1.8mm)	#2 Suture	
		MINITAPE <sup>°</sup>	
	Q-FIX (1.8mm)	#2 Suture	
		MINITAPE <sup>°</sup>	

\*Available for use with curved instrumentation

## + MINITAPE<sup>°</sup> Suture Tape

MINITAPE Suture Tape has a low profile and coreless design, which has been shown to offer a lower and more evenly distributed level of pressure\*<sup>14</sup>

The suture tape is conveniently tapered into #2 sutures for use with existing Smith+Nephew suture manipulation devices<sup>15</sup>



\*as compared to traditional #2 suture

# Ordering information

Q-FIX <sup>®</sup> KNOTLESS All-Suture Anchors*	
Reference #	Description
72205884	Q-FIX KNOTLESS All-Suture Anchor, 1.8mm, with one MINITAPE suture, blue
72205885	Q-FIX KNOTLESS All-Suture Anchor, 1.8mm, with one MINITAPE suture, co-braid blue
72205882	Q-FIX KNOTLESS All-Suture Anchor, 1.8mm, with one ULTRABRAID suture, blue
72205883	Q-FIX KNOTLESS All-Suture Anchor, 1.8mm, with one ULTRABRAID suture, cobraid-blue

Q-FIX All-Suture Anchors Pre-loaded with MINITAPE <sup>®</sup> Suture*	
72205858	Q-FIX All-Suture Anchor, 1.8mm, with one MINITAPE Suture, cobraid-white
72205859	Q-FIX All-Suture Anchor, 1.8mm, with one MINITAPE Suture, blue

Q-FIX All-Suture Anchors Pre-loaded with MAGNUMWIRE Suture	
72290123	Q-FIX MINI All-Suture Anchor, 1.8mm, with one MAGNUMWIRE Suture, cobraid-wire
25-1800	Q-FIX All-Suture Anchor, 1.8mm, with one MAGNUMWIRE Suture, cobraid-blue

\* Legal manufacturer is Smith & Nephew, Inc. 150 Minuteman Road Andover, MA 01810 USA

Q-FIX Disposable kits	
72290126	Q-FIX MINI All-Suture Anchor Disposable Kit XL, 1.8mm, includes drill, crown drill guide and sharp obturator
25-1810	Q-FIX All-Suture Anchor Disposable Kit, 1.8mm, includes drill, fish mouth tip drill guide and sharp obturator
25-1811	Q-FIX All-Suture Anchor Disposable Kit XL, 1.8mm, includes drill, crown tip drill guide and sharp obturator

Q-FIX Reusable Accessories	
Reference #	Description
72290032	Q-FIX All-Suture Anchor Drill Guide, fish mouth tip, 1.8mm, nonsterile, reusable
72290034	Q-FIX All-Suture Anchor Drill Guide XL, crown tip, 1.8mm, nonsterile, reusable
72290120	Q-FIX All-Suture Anchor Curved Drill Guide, crown tip, 1.8mm, nonsterile, reusable
72290119	Q-FIX All-Suture Anchor Curved Drill Guide XL, crown tip, 1.8mm, nonsterile, reusable
72290033	Q-FIX All-Suture Anchor Obturator, 1.8mm, nonsterile, reusable

Q-FIX Disposable Accessories	
72290124	Q-FIX MINI All-Suture Anchor Twist Drill, 1.8mm, sterile, disposable
72290030	Q-FIX All-Suture Anchor Twist Drill, 1.8mm, sterile, disposable
72290118	Q-FIX All-Suture Anchor Flexible Drill, 1.8mm, sterile, disposable

Products may not be available in all markets because product availability is subject to the regulatory and/or medical practices in individual markets. Please contact your Smith+Nephew representative or distributor if you have questions about the availability of Smith+Nephew products in your area.

For detailed product information, including indications for use, contraindications, precautions and warnings, please consult the product's applicable Instructions for Use (IFU) prior to use.

## Learn more at [smith-nephew.com](https://www.smith-nephew.com)

Smith & Nephew, Inc.  
150 Minuteman Road  
Andover, MA 01810  
USA

[www.smith-nephew.com](https://www.smith-nephew.com)  
T +978 749 1000  
US Customer Service:  
+1 800 343 5717

Manufactured by:  
ArthroCare Corporation  
7000 West William  
Cannon Drive  
Austin, TX 78735, USA

\*Trademark of Smith+Nephew.  
All trademarks acknowledged.  
©2024 Smith+Nephew. All rights reserved. 42943 V2 11/24

### References

1. Smith and Nephew 2024. Q-FIX KNOTLESS Claims Report. Internal Report 10141818 Rev A 2. Smith and Nephew 2024. Q-FIX KNOTLESS Claims Report. Internal Report 10144423 Rev B 3. Barber FA, Herbert MA. All-Suture Anchors: Biomechanical Analysis of Pullout Strength, Displacement, and Failure Mode. *Arthroscopy*. 2017;33(6):1113-1121. 4. Douglass NP, Behn AW, Safran MR. Cyclic and Load to Failure Properties of All-Suture Anchors in Synthetic Acetabular and Glenoid Cancellous Bone. *Arthroscopy*. 2017;33(5):977-985 e975. 5. Ruder JA, Dickinson EY, Peindl RD, Habet NA, Trofa DP, Fleischli JE. Cyclic and Load-to-Failure Properties of All-Suture Anchors in Human Cadaveric Shoulder Glenoid Bone. *Arthroscopy*. 2019;35(7):1954-1959 e1954. 6. Ergun S, Akgun U, Barber A, Karahan M. The Clinical and Biomechanical Performance of All-Suture Anchors: A Systematic Review. *Arthroscopy*. 2020; 2(3): e263-e275. 7. Smith and Nephew 2023. Q-FIX with MINITAPE Claims Report. Internal Report. 10090792- Revision A 8. ArthroCare Corporation 2017. Report: Design Verification, 1.8mm Q-FIX MINI Soft Suture Anchor P/N 49190-03 Rev. B. 9. ArthroCare 2019. Comparative Testing of Bone Anchor Devices, 1.8mm Q-FIX Mini Soft Suture Anchor P/N 49193-02 Rev.B 10. Nagra NS, Zargar N, Smith RD, Carr AJ. Mechanical properties of all-suture anchors for rotator cuff repair. *Bone Joint Res*. 2017;6(2):82-89. 11. Bernardoni E, Frank RM, Veera SS, et al. Biomechanical Analysis of All-Suture Anchor Fixation for Rotator Cuff Repair. *Orthop J Sports Med*. 2018;6(7 suppl4). 12. Saper MG, Meijer K, Winnier S, Popovich J, Andrews JR, Roth C. Biomechanical Evaluation of Classic Solid and All-Soft Suture Anchors for Medial Patellofemoral Ligament Reconstruction. *The American journal of sports medicine*. 2017;45(7):1622-1626. 13. ArthroCare Corporation 2017. Report: Design Validation, Q-FIX Reusable Curved Drill Guides and Disposable Flex Drill, Irvine CA. P/N 92017-01 Rev. A. 14. Smith + Nephew 2013. ULTRATAPE Pressure Film Testing. 15001847. Rev A. 15. Smith + Nephew 2017. Verification, MINITAPE Suture Manipulation Instrument Compatibility. 15005671. Rev A. 16. Smith + Nephew 2016. Feasibility, MINITAPE Knot Stack Evaluation and Knot Security. 15005268. Rev A. 17. ArthroCare Corporation PRODUCT SPECIFICATION, Q-Fix Soft Anchor System, (Catalog #s 25-1800, 25-2800, 72290123), DHF 48121. P/N 48159 Rev.L.