

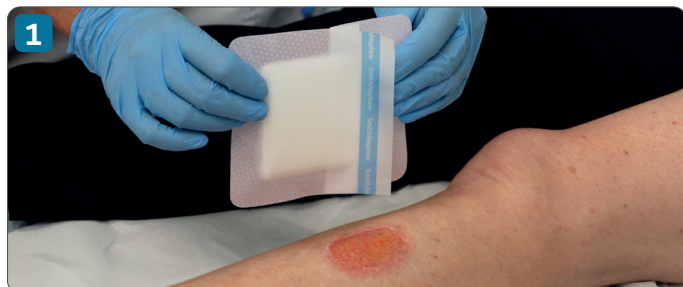
# Application guide - Square

Smith+Nephew

ALLEVYN COMPLETE CARE Foam Dressings  
with their unique construction help to **minimize leakage**\*<sup>1-3</sup>

ALLEVYN<sup>◇</sup>  
COMPLETE CARE  
Foam Dressing

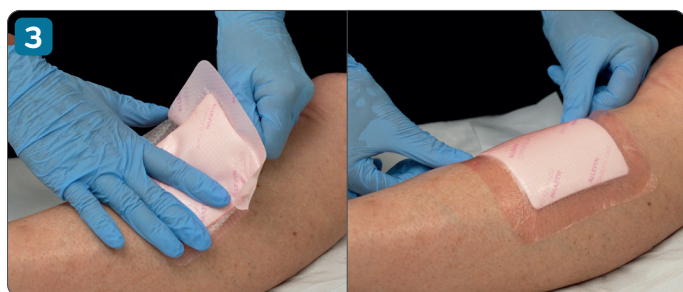
## Application steps of ALLEVYN COMPLETE CARE Square Foam Dressing



Select the appropriate dressing size, ensuring the absorbent pad will cover the entire wound or area to be protected.



Remove first liner and place the adhesive side of the dressing to the skin.



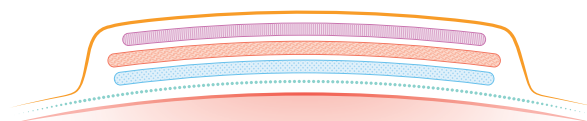
Remove remaining liner. Smooth over. If on a wound, ensure absorbent pad covers the wound.

Do not stretch the dressing.

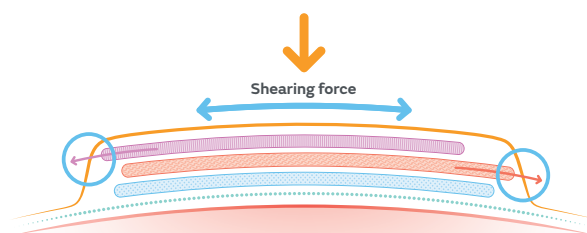


Smooth down the borders. Ensure there are no creases that could compromise the seal. The dressing can be repositioned as required.

### Dressing at rest



### Dressing with shearing force applied

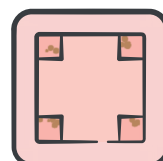


#### ShearDEFENSE<sup>◇</sup> Unbonded Layer Technology

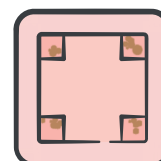
- Proprietary unbonded design enables layers to frictionally slide within the dressing\*\*<sup>4</sup>

ALLEVYN COMPLETE CARE Dressing visually masks absorbed exudate, keeping it looking fresher for longer<sup>2-8</sup> while effectively indicating when to change the dressing<sup>4</sup>

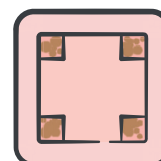
Here's a helpful diagram to show you when to get the dressing changed:



No need to change



Consider changing



Change



### Removal

- Lift one corner and slowly peel back until completely removed.
- Dispose of according to local clinical protocols or throw away hygienically after use.



### Observation

When used for pressure injury prevention, frequently inspect the skin for pressure damage by lifting back one corner, inspecting and then repositioning the dressing.

Products may not be available in all markets because product availability is subject to the regulatory and/or medical practices in individual markets. Please contact your Smith+Nephew representative or distributor if you have questions about the availability of Smith+Nephew products in your area. For detailed product information, including indications for use, contraindications, warnings and precautions, please consult the product's Instructions for Use (IFU) prior to use.

\*As demonstrated in vitro.

References: 1. Smith+Nephew 2025. Internal report CSD.AWM.25.008. 2. Tiscar-González V, et al. Adv Skin Wound Care. 2021;34(1):23-30. 3. Rossington A, et al. Wounds UK. 2013;9(4):91-95. 4. Smith+Nephew 2025. Internal report CSD.AWM.25.023 V2. 5. Smith+Nephew 2025. Internal report CSD.AWM.25.009 V2. 6. Simon D, Bielby A. Wounds UK. 2014;10(3):80-87. 7. Joy H, et al. J Wound Care. 2015;24(7):312, 314-317. 8. Costa B, Allen D. Poster presented at: EWMA; 2023.