

Introducing the **RENASYS[®] EDGE** System

- Easy to use¹
- Built for efficiency²⁻⁴
- Patient-friendly^{2,5}

Smith+Nephew

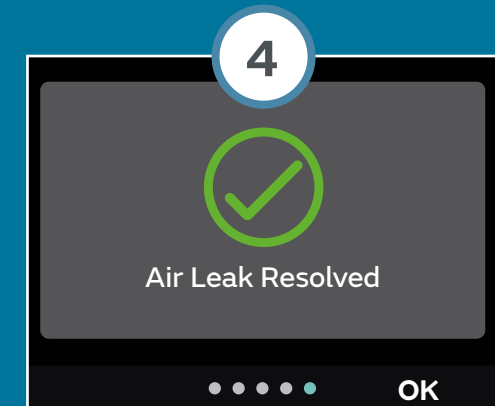
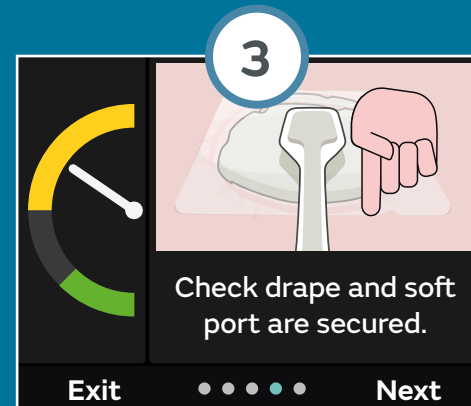
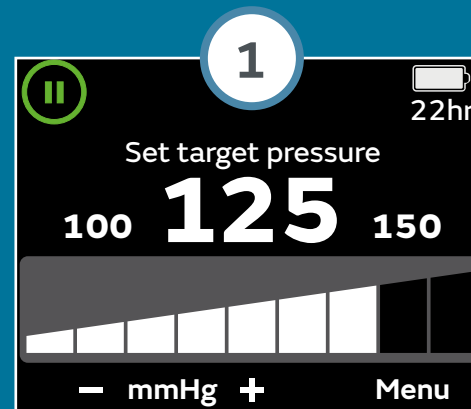
RENASYS[®] EDGE
Negative Pressure Wound
Therapy System



Designed with simplicity at its core

Simple to set up, easy to learn¹

- Pump offers an intuitive, user-friendly interface for easy to learn operation and troubleshooting¹
- Designed to support clinician training¹



Efficiency at every turn

Self-test functionality removes the need for annual servicing

- Sturdy, reliable and durable to help minimise the number of device returns³
- Streamlined cleaning process between patients takes less than 5 minutes⁴



Designed for clinicians and patients

Lightweight and portable^{2*}

- Compact and wearable: designed to allow patients to continue with their daily lives^{*2}
- A hidden 300ml canister is designed to be discreet while still allowing assessment of exudate⁵



Hidden canister

*Average weight is 1.133kg

Clinicians describe the
RENASYS[®] System as

**“Effective,
reliable
and easy
to use”^{†6}**



Shaping what's possible in wound care

Smith & Nephew Pty Ltd
Australia

T +61 2 9857 3999

F +61 2 9857 3900

smith-nephew.com/en-au

Smith & Nephew Ltd
New Zealand

T +64 9 820 2840

F +64 9 820 2841

smith-nephew.com/en-nz

♦Trademark of Smith+Nephew
All trademarks acknowledged
© June 2024 Smith+Nephew
39084-anz V1 06/24

This material is intended for healthcare professionals. For detailed product information, including indications for use, contraindications, precautions and warnings, please consult the product's applicable Instructions for Use (IFU) prior to use.

References: **1.** Smith+Nephew 2022. RENASYS EDGE System Human Factors Summative Report Summary. Internal Report. CSD.AWM.22.071. **2.** Smith+Nephew 2022. Summary of footprint, portability, wearability, weight and audible noise for the RENASYS[®] EDGE System. Internal Report. CSD.AWM.22.067. **3.** Smith+Nephew 2022. Internal Report. CSD.AWM.22.069. **4.** Smith+Nephew 2022. Internal Report. CSD.AWM.22.068. **5.** Smith+Nephew 2022. How the RENASYS EDGE Negative Pressure Wound Therapy System provides continuity of care to the patient Internal Report. EO.AWM.PCS270.003.V1. **6.** Smith+Nephew 2021. RENASYS Brand Equity Research Report. Internal Report.

*Average weight is 1.133kg. †n=179.