

How ALLEVYN[®] LIFE Foam Dressing can help to optimise the management of chronic wounds: adapting to the 'new normal'

+ Plus points

This Smith+Nephew symposium at the EWMA 2020 Virtual Conference discussed how dressing selection can impact wound care outcomes, particularly in a changing healthcare environment, such as the COVID-19 pandemic. For example, in a community-based study of 94 patients with 128 chronic wounds, switching to ALLEVYN LIFE Dressing from previous dressings resulted in:



47.1%

reduction in mean weekly dressing change frequency versus previous dressings (from 3.14 to 1.66; $p < 0.001$)¹



58.7%

reduction in mean weekly dressing costs versus previous dressings (€16.25 saving; $p < 0.001$)¹



Improved healthcare professional (HCP) and patient satisfaction versus previous dressings¹

EWMA 2020 virtual symposium

- EWMA 2020 was hosted as a virtual event due to COVID-19; the pandemic has highlighted the need for flexibility in healthcare delivery and has helped us to find new ways to ensure chronic wounds continue to be managed effectively
- The focus of this Smith+Nephew symposium, attended by >400 delegates, was how to optimise the management of chronic wounds in the 'new normal'
- Presentations at the symposium reviewed:
 - A EWMA survey that provided insights into how COVID-19 has changed working practices for wound care²
 - How dressing selection can affect dressing change frequency and costs when managing excess exudate in chronic wounds³
 - Results from a new study showing how switching to ALLEVYN LIFE Dressing from other dressings can help improve clinical and economic outcomes in a community setting¹

Wound care in the 'new normal'

- Tina Chambers, a Clinical Nurse Specialist and a Trustee of the Tissue Viability Society, UK, presented the results of a EWMA survey that aimed to:
 - Determine the pandemic's impact on wound care practice and specialist roles
 - Identify current challenges and how the future of wound care is perceived
- There were 217 responses from across Europe, mostly from wound care specialist nurses (39.8%), surgeons (12.8%) and generalist nurses (11.7%)²
- Most respondents represented the acute care setting (32.5%), wound care clinics (15.3%) or community hospitals (13.1%)²
- In total, 43.4% of respondents experienced >50% change in their duties in response to the COVID-19 pandemic²
- During lockdowns, 46.1% of respondents could continue to have face-to-face meetings with patients, and 31.5% used a combination of face-to-face and remote consultations²
 - Similar proportions were reported after the easing of COVID-19 restrictions²
- A substantial shift towards patient self-care was reported with 55.6% of respondents reporting ≥20% increase since the onset of the pandemic (Figure 1)²
 - A large proportion of patients are expected to continue to self-care after the pandemic²
- Interestingly, 55.8% of respondents were confident that patients could apply their own wound care products²
 - In contrast, 44.2% of respondents were not confident to let patients apply their wound care products although they had not explored if patients would be confident to take on that role (Figure 1)²

+ Evidence in focus

Highlights report: European Wound Management Association (EWMA) Virtual Conference
ALLEVYN® LIFE Foam Dressing satellite symposium (19 November 2020)

Wound care in the 'new normal' (continued)

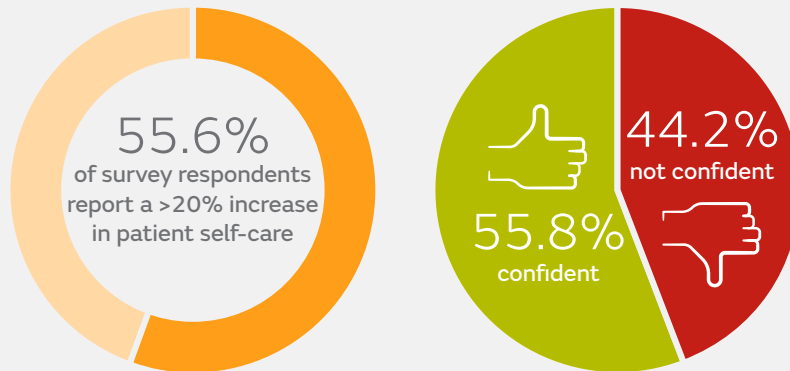


Figure 1. Respondents reporting a change in the number of patients performing self-care for chronic wounds and respondent confidence that patients are able to self-care²

- Challenges that may arise after the pandemic were identified as:²
 - Worsening of chronic wounds (43.8%)
 - An increase in acute wounds with chronic complications (31.3%)
 - An increased incidence of infection in chronic wounds (35.5%)
- Respondents noted that more patients will need to self-care and that hospital admissions for chronic wounds will increase²
- Several positive aspects of wound care during lockdown were noted including:²
 - An increased use of telemedicine
 - Quicker healing of neuropathic ulcers due to reduced patient activity
 - More patient involvement in their wound care than before the pandemic
- Tina concluded by proposing that successful wound care outcomes can be achieved by embracing technology, increasing use of remote consultations, and supporting patient self-care²

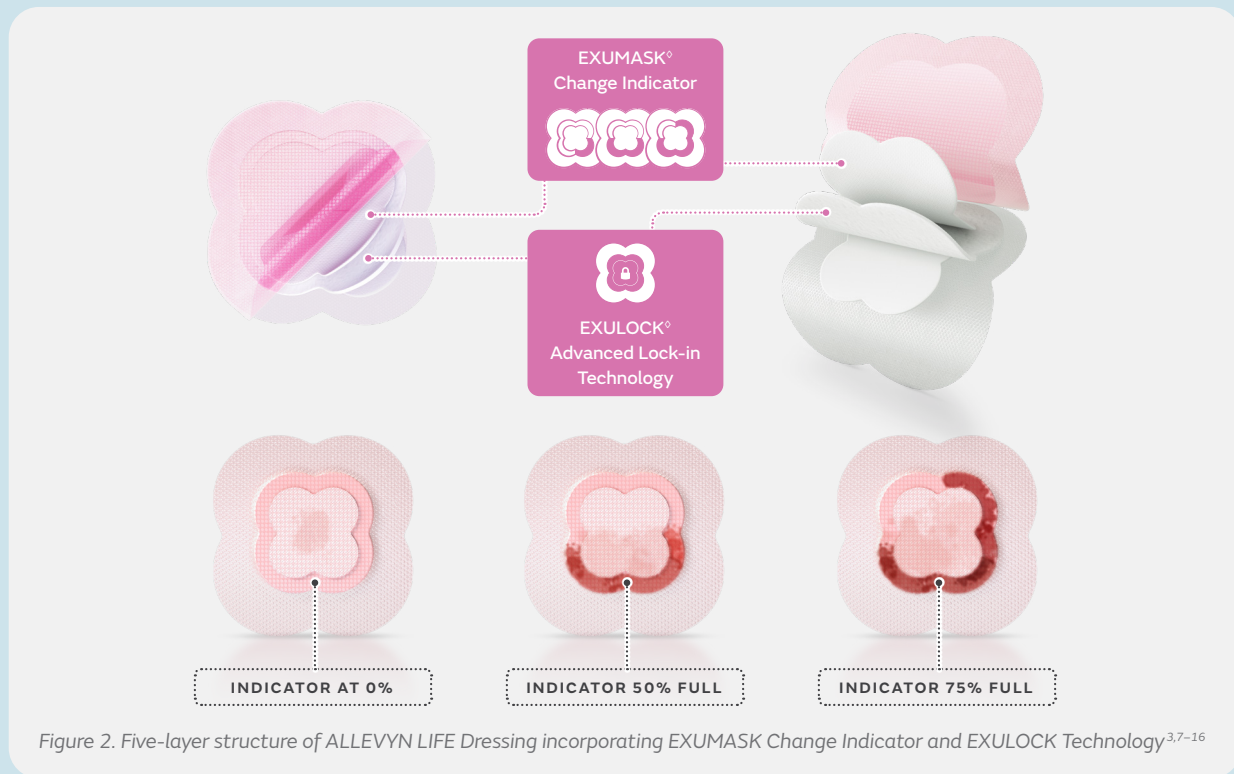
Managing exudate in chronic wounds using ALLEVYN® LIFE Dressing

- The prevalence of chronic wounds in the USA and Europe, as well as the associated costs, were highlighted by Jacqui Hughes, Clinical Excellence Manager from Smith+Nephew, UK³
- She focused on three key factors that may be affected by dressing selection and can drive wound care costs:^{3,4}
 - Time to heal a wound
 - Incidence of complications
 - Frequency of dressing changes
- Dressing change frequency can affect the weekly cost of dressing changes, nursing costs and the risk of developing wound complications^{3,4}
- Jacqui noted that frequent dressing changes can both impact on the local economy by increasing costs and delay wound healing by temporarily reducing wound temperature³
- It has also been shown that 70% of dressing changes are driven by scheduling⁵ and that half of dressing changes in the community may be clinically unnecessary⁶
- Therefore, the type of dressing used (ie, foam dressings, alginates, gelling fibres or negative pressure wound therapy) and how frequently they need to be changed can affect the wound healing environment³
- She went on to describe the features of ALLEVYN LIFE Dressing that may help to address some of these challenges and facilitate patient self-care³
- With its five-layer design, ALLEVYN LIFE Dressing has a wear time of 7 days (5 days for use on the sacrum), and the need for dressing changes can be easily assessed using its EXUMASK® Change Indicator (Figure 2)⁷⁻¹³
- In addition, EXULOCK® Advanced Lock-in Technology minimises leakage helping to extend the dressing wear time (Figure 2) and is suitable for use on fragile skin^{6,8,14-16}
- Jacqui then introduced the concept of 'One more day' for patients with chronic wounds that might benefit from the longer dressing wear time offered by ALLEVYN LIFE Dressing, such as those who:³
 - Have active lifestyles
 - Have wounds with low to moderate exudate
 - Are engaged in their own care
- Using the 'One more day' approach could help to reduce dressing change frequency for some patients with chronic wounds while maintaining wound healing and comfort³

+ Evidence in focus

Highlights report: European Wound Management Association (EWMA) Virtual Conference
ALLEVYN® LIFE Foam Dressing satellite symposium (19 November 2020)

Managing exudate in chronic wounds using ALLEVYN® LIFE Dressing (continued)



Impact of using ALLEVYN LIFE Dressing to manage chronic wounds

- The potential impact of introducing ALLEVYN LIFE Dressing in a community setting on the three main cost drivers for chronic wound care was demonstrated by Veronica Tiscar-González, a nurse from the Basque Health Service and Biocruces Bizkaia Health Research Institute in Spain¹⁷
- She presented results of her recently published study showing that switching to ALLEVYN LIFE Dressing from a variety of previous dressings (mostly other foams or gelling fibres) can help to improve efficiency and quality of wound management¹
- The study was ambispective in design (retrospective and prospective data collection) and involved 24 primary care centres and six nursing homes¹
- A total of 94 patients were included, with 128 wounds, who received 4 weeks of follow up after switching to ALLEVYN LIFE Dressing from previous dressings¹
 - More than 70% of wounds were leg ulcers or pressure ulcers and 55% of wounds were 2–10cm²
- A significant 47.1% relative reduction in the frequency of weekly dressing changes was achieved using ALLEVYN LIFE Dressing instead of previous dressings ($p < 0.001$; Figure 3)¹
- Reasons for dressing changes differed with use of ALLEVYN LIFE Dressing than with previous dressings, with nurses reporting 50% fewer changes due to routine dressing change, saturated dressings or stained dressings¹
- Use of ALLEVYN LIFE Dressing also had a significant impact on reducing mean weekly dressing costs by 58.7% compared with previous dressings ($p < 0.001$; Figure 3)¹
 - This saving was maintained even when nursing costs were included and when all price points for ALLEVYN LIFE Dressing were assessed ($p < 0.05$)¹
- HCP and patient satisfaction both improved with use of ALLEVYN LIFE Dressing compared with previous dressings¹
- For overall dressing performance, 68% of HCPs rated ALLEVYN LIFE Dressing as better than the previous dressings used (Figure 4)¹
- Most HCPs noted that wound size and exudate levels improved during use of ALLEVYN LIFE Dressing¹
 - 92.2% said they would recommend use of ALLEVYN LIFE Dressing within their healthcare organisation¹
- Improvements in overall dressing experience, exudate control and dressing comfort were reported by most patients compared with their previous dressings¹
 - More patients rated ALLEVYN LIFE Dressing as 'good' or 'very good' compared with their previous dressing¹

+ Evidence in focus

Highlights report: European Wound Management Association (EWMA) Virtual Conference
ALLEVYN® LIFE Foam Dressing satellite symposium (19 November 2020)

Impact of using ALLEVYN® LIFE Dressing to manage chronic wounds (continued)

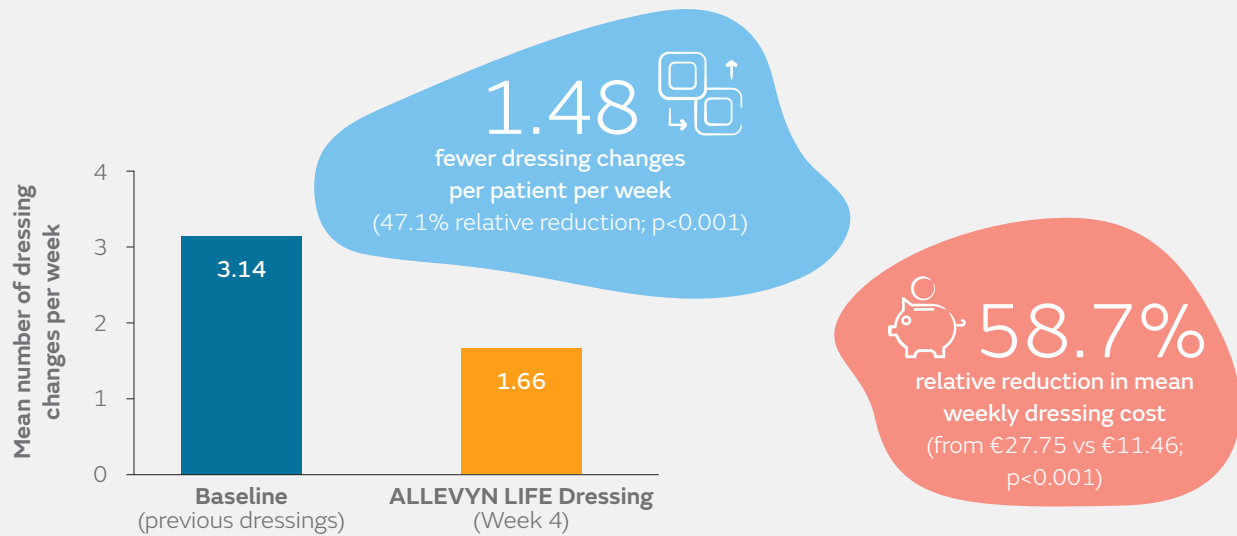
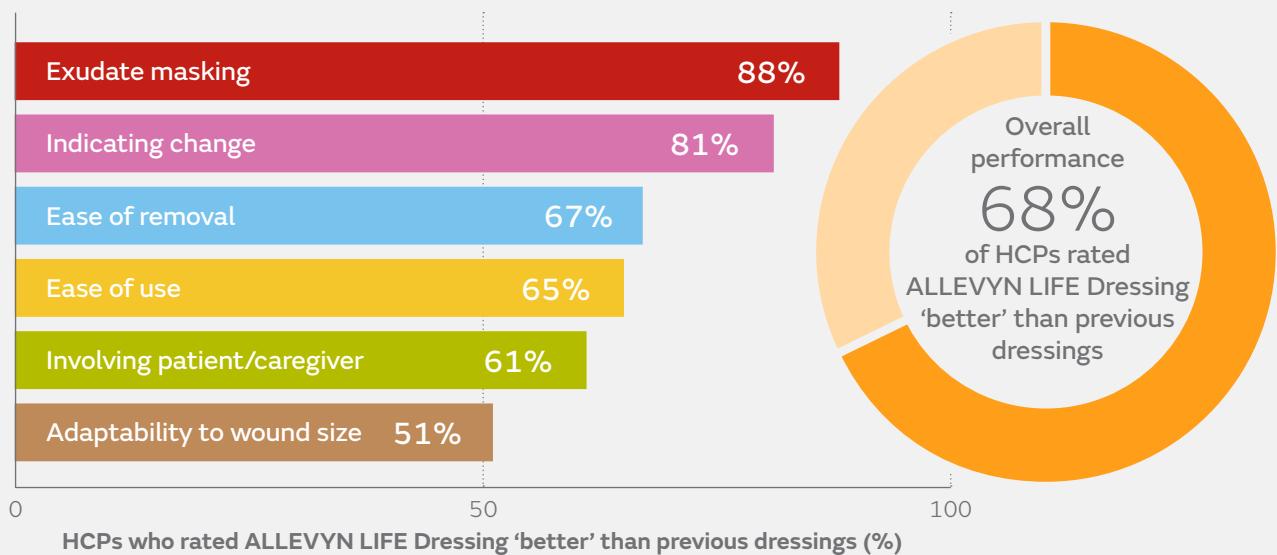


Figure 3. Reductions in mean weekly dressing change frequency (and mean weekly costs) after switching to ALLEVYN LIFE Dressing from previous dressings¹

- During use of ALLEVYN LIFE Dressing, there was a 28.3% relative reduction in mean wound area (2.82cm² difference; $p < 0.01$)¹
 - By Week 4, 68.3% of wounds (n=71) had reduced in size, and of those wounds, 85.9% had reduced by >30%¹
- In this Spanish community study, switching to ALLEVYN LIFE Dressing from previous dressings helped to significantly reduce dressing change frequency and cost, as well as deliver improved HCP and patient satisfaction^{1,17}



More patients rated ALLEVYN LIFE Dressing as 'good' or 'very good' compared with their previous dressings

Figure 4. HCP and patient ratings of ALLEVYN LIFE Dressing compared with previous dressings¹

+ Evidence in focus

Highlights report: European Wound Management Association (EWMA) Virtual Conference
ALLEVYN® LIFE Foam Dressing satellite symposium (19 November 2020)

Summary

- During the COVID-19 pandemic, wound care specialists have adapted their practice by embracing technology and remote consultations, and by providing support to help patients self-care.²
- The features of ALLEVYN® LIFE Dressing, such as the EXUMASK® Change Indicator,⁷⁻¹³ which shows when the dressing needs to be changed, and EXULOCK® Technology,^{6,8,14-16} which helps minimise exudate leakage and therefore maximise wear time, may help to increase HCP confidence that patients can self-care when appropriate.
- Dressing change frequency can affect the costs of managing chronic wounds, nursing time and the risk of developing wound complications.^{3,4}
- Switching to ALLEVYN LIFE Dressing from previous dressings has been shown to significantly reduce dressing change frequency and dressing costs ($p < 0.001$) in patients with chronic wounds, as well as provide improvements in HCP and patient satisfaction.^{1,9}

To view the presentations from this symposium or to learn more about the evidence supporting Smith+Nephew wound management products, please visit our Education and Evidence website at: www.smith-nephew.com/education

For detailed product information, including indications for use, contraindications, precautions and warnings, please consult the product's applicable Instructions for Use (IFU) prior to use.

References

1. Tiscar-González V, Rodriguez MJM, Rabadán Sainz C, et al. Clinical and economic impact of wound care using a polyurethane foam multi-layer dressing versus standard dressings on delayed healing ulcers. *Adv Skin Wound Care*. 2021;34:23–30.
2. Chambers T. Understanding the “new normal” in the delivery of wound care to patients. Results of a new EWMA survey. Presentation at the EWMA 2020 Virtual Conference 19 November 2020.
3. Hughes J. Improving outcomes one day at a time with ALLEVYN® LIFE: Introducing the ALLEVYN One more day approach. Presentation at the EWMA 2020 Virtual Conference 19 November 2020.
4. Lindholm C and Searle R. Wound management for the 21st century: combining effectiveness and efficiency. *Int Wound J*. 2016;13 Suppl 2:5–15.
5. Fletcher J and Wasek S. Clinician perspective on time and resources related to dressing changes. *Wounds Int J*. 2016;7(4):28–32.
6. Joy H, Bielby A and Searle R. A collaborative project to enhance efficiency through dressing change practice. *J Wound Care*. 2015;24(7):312, 314–317.
7. Simon D, Bielby A. A structured collaborative approach to appraise the clinical performance of a new product. *Wounds UK*. 2014;10(3):80–87.
8. Rossington A, Drysdale K, Winter R. Clinical performance and positive impact on patient wellbeing of ALLEVYN® LIFE. *Wounds UK*. 2013;9(4):91–95.
9. Smith+Nephew Internal report DS/14/303/R. 2016. Wound model testing of new ALLEVYN LIFE Gen2 WCL dressing using horse serum at a flow rate modelling that of a moderately exuding wound.
10. Smith+Nephew Internal report (HVT080) GMCA-DOF/08. 2016. Product performance of next generation ALLEVYN LIFE.
11. Lisco C. Evaluation of a new silicone gel-adhesive hydrocellular foam dressing as part of a pressure ulcer prevention plan for ICU patients. Poster presented at the Wound, Ostomy and Continence Nurses Society™ (WOCN®) Annual Conference; 22–26 June 2013; Seattle, Washington.
12. Stephen-Haynes J, Bielby A, Searle R. The clinical performance of a silicone foam in an NHS community trust. *JCN*. 2013;27(5):50–59.
13. Smith+Nephew Internal report DS/16/061/R. 2016. Subjective comparison of masking ability of the new ALLEVYN LIFE versus current ALLEVYN LIFE by healthcare professionals.
14. Smith+Nephew Internal report DS/15/025/R. 2016. New ALLEVYN LIFE Gen2 WCL - physical testing.
15. Forni C, D'Alessandro F, Gallerani P, et al. Effectiveness of using a new polyurethane foam multi-layer dressing in the sacral area to prevent the onset of pressure ulcer in the elderly with hip fractures: A pragmatic randomised controlled trial. *Int Wound J*. 2018;15(3):383–390.
16. Smith+Nephew Internal report CE/047/ALF. 2016. A randomised cross-over clinical evaluation to compare performance of ALLEVYN® LIFE and Mepilex® Border dressings on patient wellbeing-related endpoints.
17. Tiscar-González V. Clinical and economic results of switching to ALLEVYN LIFE Foam Dressing from various standard dressings in a community-based study. Presentation at the EWMA 2020 Virtual Conference 19 November 2020.