

+ Think fast. Act faster.

**Smith+Nephew**

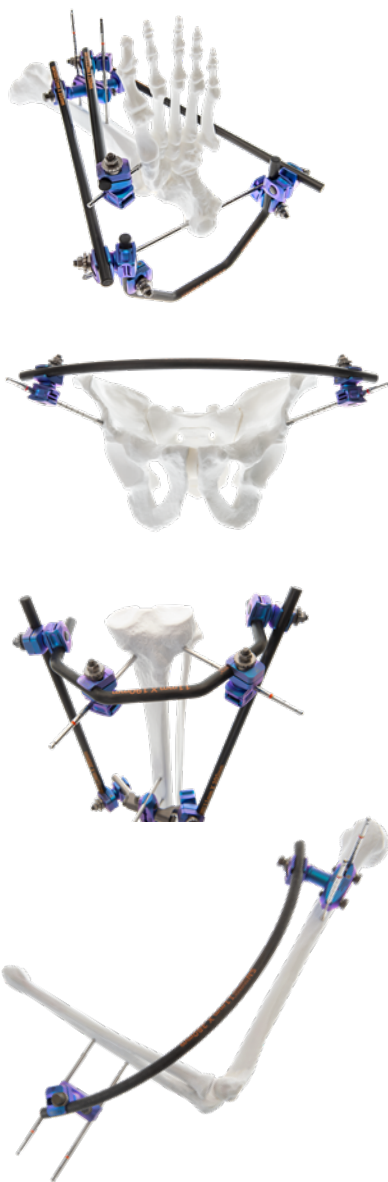
**MAVERICK**   
Unilateral External Fixation



# Damage Control Orthopedics demands fast thinking and rapid deployment.

Eliminate confusion, optimize the workflow.  
Just ask for the MAVERICK<sup>®</sup> Unilateral External Fixation Set.

The MAVERICK Unilateral External Fixation system includes all components needed to apply a temporary ex-fix construct to **any lower extremity fracture using one tray.**



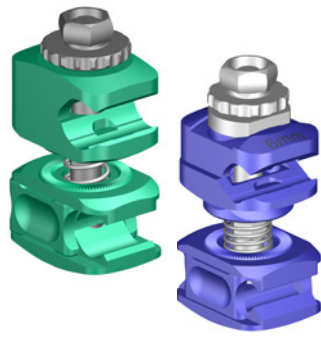
From metatarsal to iliac crest, **Pins in 3mm, 4mm, 5mm and 6mm** are on the tray, all captured by the MAVERICK Clamp.

MAVERICK Stainless Steel Pins are self-drilling and self tapping. In biomechanical testing MAVERICK Stainless Steel Pins exhibited low insertion torque, whilst maintaining high pullout strength.<sup>1,2</sup>

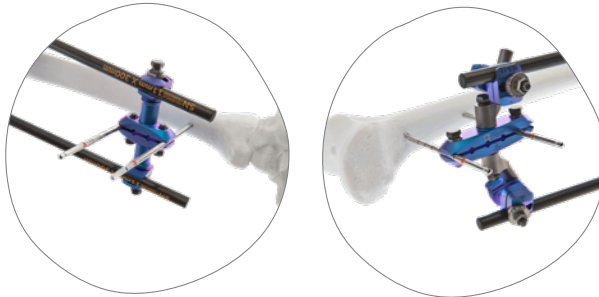
**Curved and Bent Bars** allow the surgeon to wrap around the anatomy without requiring additional clamp junctions.<sup>3</sup>

- Support the tibial plateau or protect the hindfoot using the MAVERICK Bent Bar
- Span the pelvis with one Bar, two Clamps and two Pins
- Stabilize the upper limb with one or two Bent Bars, two Multi-Pin Clamps and four Pins

\*demonstrated in biomechanical testing



The **MAVERICK<sup>®</sup> Swivel Clamp** provides a 30° arc of angulation at the Pin-to-Bar interface, allowing out-of-plane Bar-to-Bar and Bar-to-Pin connections in one Clamp design.<sup>4</sup>

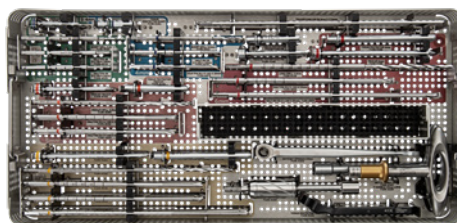


**MAVERICK Multi-Pin Clamps** in four-hole and six-hole options allow parallel Pin placement in the diaphysis. Made from titanium, the MAVERICK Multi-Pin Clamps are low profile with high grip strength.<sup>5,6</sup>

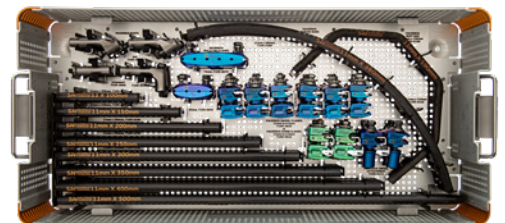
Posts or Swivel attachments connect to the Multi-Pin Clamp enabling flexibility in construct assembly, with minimal junctions.



The **Afterburner** is a powered torque-limited wrench that allows rapid provisional tightening of the construct, before definitive tightening with the T-Handle or Wrench.



Upper tray



Lower tray

The MAVERICK Unilateral External Fixation Set houses all of these components in **one Tray**. Optimize shelf space. Eliminate confusion.

**Think fast. Act faster.**

Products may not be available in all markets because product availability is subject to the regulatory and/or medical practices in individual markets. Please contact your Smith+Nephew representative or distributor if you have questions about the availability of Smith+Nephew products in your area.

Smith & Nephew, Inc.  
1450 Brooks Road  
Memphis, TN 38116  
USA

[www.smith-nephew.com](http://www.smith-nephew.com)

<sup>®</sup>Trademark of Smith+Nephew.  
All trademarks acknowledged.  
©2023 Smith+Nephew.  
39059 V1 05/23

---

## References

1. Smith+Nephew 2021. Evaluation of the axial pullout strength from polyurethane foam of the stainless steel (SS) MAVERICK 3 mm half pins as compared to the SS Austin Miller Trauma (AMT) 3 mm half pin. OR-21-166.
2. Smith+Nephew 2022. Evaluation of the maximum insertion torque and axial pullout strength from polyurethane foam of the stainless steel MAVERICK 3 mm half pins as compared to the stainless steel JET-X distal radius 3 mm half pin. Internal Report. OR-22-045.
3. Smith+Nephew 2021. Construct fatigue and static testing of the MAVERICK system compared to the JET-X bar system of a simulated pelvic ring fracture. OR-21-171.
4. Smith+Nephew 2022. Design Verification of MAVERICK Swivel Mechanism.
5. Smith+Nephew 2021. Evaluation of the axial pullout strength of the MAVERICK multipin clamp with the MAVERICK 3 mm stainless steel half pin. OR-21-167.
6. Smith+Nephew 2022. Dimensional Comparison of MAVERICK and JET-X Multi-Pin Clamps