

# + RENASYS<sup>◇</sup>-G Gauze Dressing Kit with Soft Port application

Use clean or aseptic techniques for application, according to your institutional protocol. Thorough wound cleansing should occur with each dressing change.

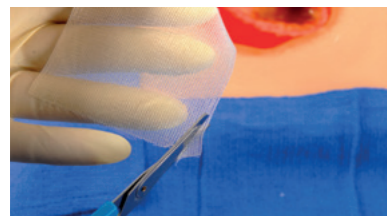
## Clean and debride



1. Debride any devitalized or necrotic eschar tissue. Cleanse the wound and pat dry.



2. If desired, protect the periwound skin from exposure to moisture and adhesive through the use of skin sealant. Allow the skin sealant to dry fully prior to placement of the transparent film.



3. If desired, a non-adherent wound contact layer may be applied. Trim a single layer of non-adherent gauze and lay across the wound bed.

## Dress wound with gauze



4. Apply a layer of saline moistened gauze to wound bed. Unfold remaining saline-moistened gauze and loosely fill the entire wound cavity. Avoid over packing the wound.

**Precaution:** If multiple pieces of wound filler are needed to fill the wound profile, count and record how many pieces are present to ensure all pieces are removed at a dressing change to minimize the risk of retention and possible infection.

Use of gauze as a filler in wounds that are in a weight bearing location or have moderate to heavy drainage may challenge the transfer of fluid and vacuum. Foam is recommended in these wounds.



## Seal the wound



5. While holding the transparent film, expose one side of the adhesive backing by removing a single panel, and apply over the wound. Cover wound filler with transparent film, removing remaining adhesive panels to seal, then the top stabilization panel.

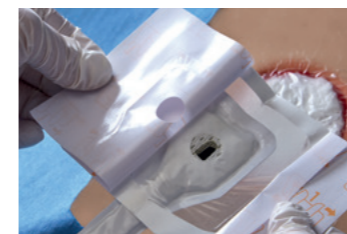
**Note:** Avoid stretching or pulling the transparent film to minimize tension or trauma to the periwound skin.

Overlap the edges of the transparent film by a minimum of 7.5cm/3in when using multiple pieces of transparent film.

## Apply RENASYS Soft Port



6. Cut a circular opening (no less than 2cm/¾in in diameter) in the centre of the film, over the wound filler. Remove any loose transparent film and dispose of away from the wound.



7. Remove the adhesive backing panel from the RENASYS Soft Port dressing, and align directly over the hole in the transparent film. Use gentle pressure to anchor the Soft Port to the transparent film.



8. Smooth the dressing down while removing the RENASYS Soft Port stabilization frame.



9. Secure the RENASYS Soft Port to the patient according to your institutional protocol. Ensure the aeration disc, located near the orange quick click connector, is not covered or otherwise occluded by the method used to secure the Soft Port.



10. Connect the RENASYS Soft Port to the canister tubing by pushing the orange quick click connectors together. An audible click indicates connection is secure. Activate the RENASYS pump ensuring that it is operating at the prescribed therapy level.

For detailed product information, including indications for use, contraindications, effects, precautions, warnings, and important safety information, please consult product's Instructions for Use (IFU) prior to use