

The **RENASYS[◇] EDGE** System

Quick reference guide

Smith+Nephew

RENASYS[◇] EDGE
Negative Pressure Wound
Therapy System



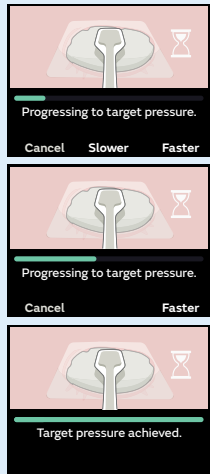
The RENASYS[®] EDGE System



RENASYS[®] EDGE
Negative Pressure Wound
Therapy System

Power on the device and start therapy

Press the button to **start/pause** the therapy



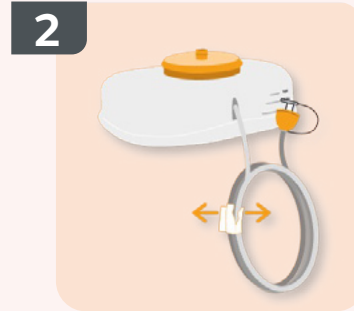
Switch **On** the pump



Installing a new canister



Ensure therapy is paused or the pump is **Off**



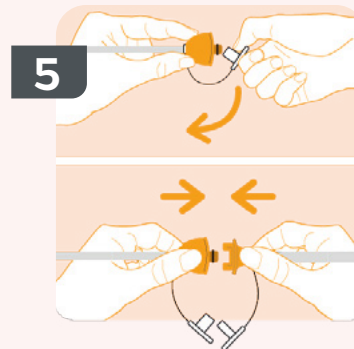
Remove the paper tape around the canister tubing and release tubing to full length



Position the canister so that the tubing is facing to the rear of the pump then align the pump over the canister



Push down on the pump until you hear a click from the release button



Remove the caps from both quick click connectors and push them together until they click. facing to the rear of the pump then align the pump over the canister



Start therapy by pressing  button.

RENASYS[®]-F Foam and -G Gauze Dressing Kit with Soft Port application

Clean and debride



Debride any devitalized or necrotic eschar tissue. Cleanse the wound and pat dry.

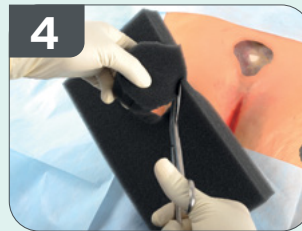


If desired, protect the periwound skin from exposure to moisture and adhesive through the use of skin sealant. Allow the skin sealant to dry fully prior to placement of the transparent film.



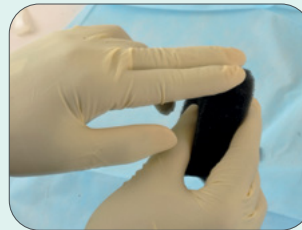
If desired, a non-adherent wound contact layer may be applied. Trim a single layer of non-adherent gauze and lay across the wound bed.

If dressing wound with foam...



Cut foam dressing to fit the size and shape of the wound and place cut foam into the wound. Avoid over packing. Foam should completely fill the wound cavity. It may be necessary to stack pieces of foam in deep wounds.

Precaution: If multiple pieces of wound filler are needed to fill the wound profile, count and record how many pieces are present to ensure all pieces are removed at a dressing change to minimise the risk of retention and possible infection.



Foam should be cut to fit loosely into wound bed. Do not force or tightly pack foam into any areas of the wound to avoid damaging underlying tissue.



Do not place foam into blind or unexplored tunnels.

If a tunnel of known depth presents, cut foam longer than the tunnel, to ensure direct contact is made with the foam in the primary wound cavity.

Do not cut foam directly over the wound cavity to avoid foam fragments from falling into the wound.

Rub edges of the foam away from the open wound to remove loose fragments after cutting.

If dressing wound with gauze...



Apply a layer of saline moistened gauze to wound bed. Unfold remaining saline-moistened gauze and loosely fill the entire wound cavity. Avoid over packing the wound.



Precaution: If multiple pieces of wound filler are needed to fill the wound profile, count and record how many pieces are present to ensure all pieces are removed at a dressing change to minimize the risk of retention and possible infection.

Use of gauze as a filler in wounds that are in a weight bearing location or have moderate to heavy drainage may challenge the transfer of fluid and vacuum. Foam is recommended in these wounds.



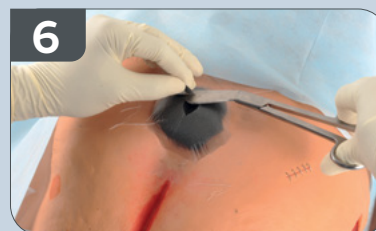
While holding the transparent film, expose one side of the adhesive backing by removing a single panel, and apply over the wound.



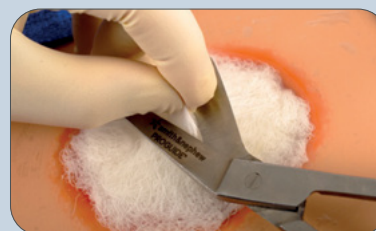
Cover wound filler with transparent film, removing remaining adhesive panels to seal, then the top stabilisation panel.

Note: Avoid stretching or pulling the transparent film to minimise tension or trauma to the periwound skin. Overlap the edges of the transparent film by a minimum of 7.5cm/3in when using multiple pieces of transparent film.

Apply RENASYS Soft Port



Cut a circular opening (no less than 2cm/ $\frac{3}{4}$ in in diameter) in the centre of the film, over the wound filler. Remove any loose transparent film and dispose of away from the wound.

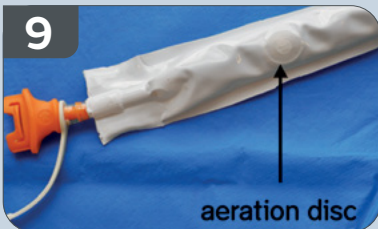




Remove the adhesive backing panel from the RENASYS Soft Port dressing, and align directly over the hole in the transparent film. Use gentle pressure to anchor the Soft Port to the transparent film.



Smooth the dressing down while removing the RENASYS Soft Port stabilisation frame.



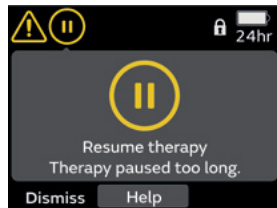
Secure the RENASYS Soft Port to the patient according to your institutional protocol. Ensure the aeration disc, located near the orange quick click connector, is not covered or otherwise occluded by the method used to secure the Soft Port.



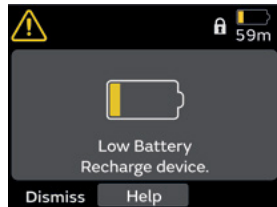
Connect the RENASYS Soft Port to the canister tubing by pushing the orange quick click connectors together. An audible click indicates connection is secure. Activate the RENASYS pump ensuring that it is operating at the prescribed therapy level. Please refer to your RENASYS pump manual for full operating instructions. The finished dressing should be fully compressed, firm to the touch and leak-free.

For detailed product information, including indications for use, contraindications, effects, precautions, warnings, and important safety information, please consult product's Instructions for Use (IFU) prior to use

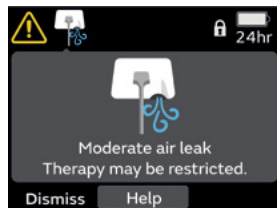
Alerts



Therapy paused too long



Low battery



Moderate air leak

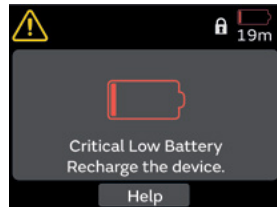


Pump too hot for charging

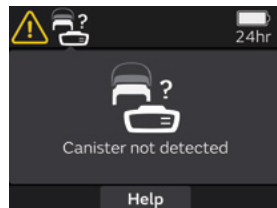
Alarms



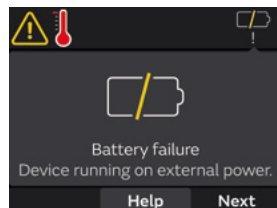
Blockage



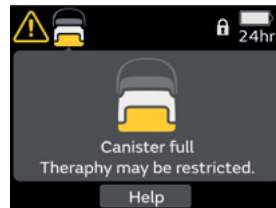
Critical low battery



Canister missing



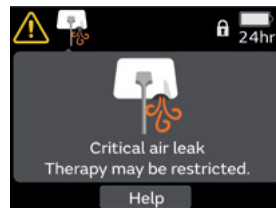
Battery failure



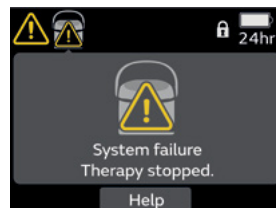
Canister full



Pump too hot



Critical air leak



High vacuum/System failure

Looking for more information? Scan the QR code for:

- Customer Care contacts
- Troubleshooting
- Basic Operation videos



Smith & Nephew Pty Ltd
Australia
T +61 2 9857 3999
F +61 2 9857 3900
smith-nephew.com/en-au

Smith & Nephew Ltd
New Zealand
T +64 9 820 2840
F +64 9 820 2841
smith-nephew.com/en-nz

◇Trademark of Smith+Nephew
All trademarks acknowledged
© June 2024 Smith+Nephew
39651-anz V1 06/24

Icons and symbol glossary

Pump buttons

	Play/Pause
	Mute
	Canister Release
	Recessed Lock/Unlock
	Three Multifunction

Pump lights

	System OK
	Battery Warning
	Alarm/Alert
	External Power Indicator

Battery icons

	Full Charge
	Low
	Critical Low
	Charging
	Full Charged
	Battery Failure

Therapy screen icons

	Y-Connector Mode
	Intermittent Mode
	Continuous Mode

Status bar icons

	Paused
	System OK
	Alarm/Alert
	Critical Air Leak
	Moderate Air Leak
	Blockage
	Canister Missing
	System Failure/High Vacuum
	Pump Too Hot Alert
	Pump Too Hot Alarm
	Paused Too Long
	Canister Full
	Locked
	Bluetooth On
	Muted

This material is intended for healthcare professionals.
For detailed product information, including indications for use,
contraindications, precautions and warnings, please consult
the product's applicable Instructions for Use (IFU) prior to use.