

Smith+Nephew

RALLY[◇]
Bone Cement

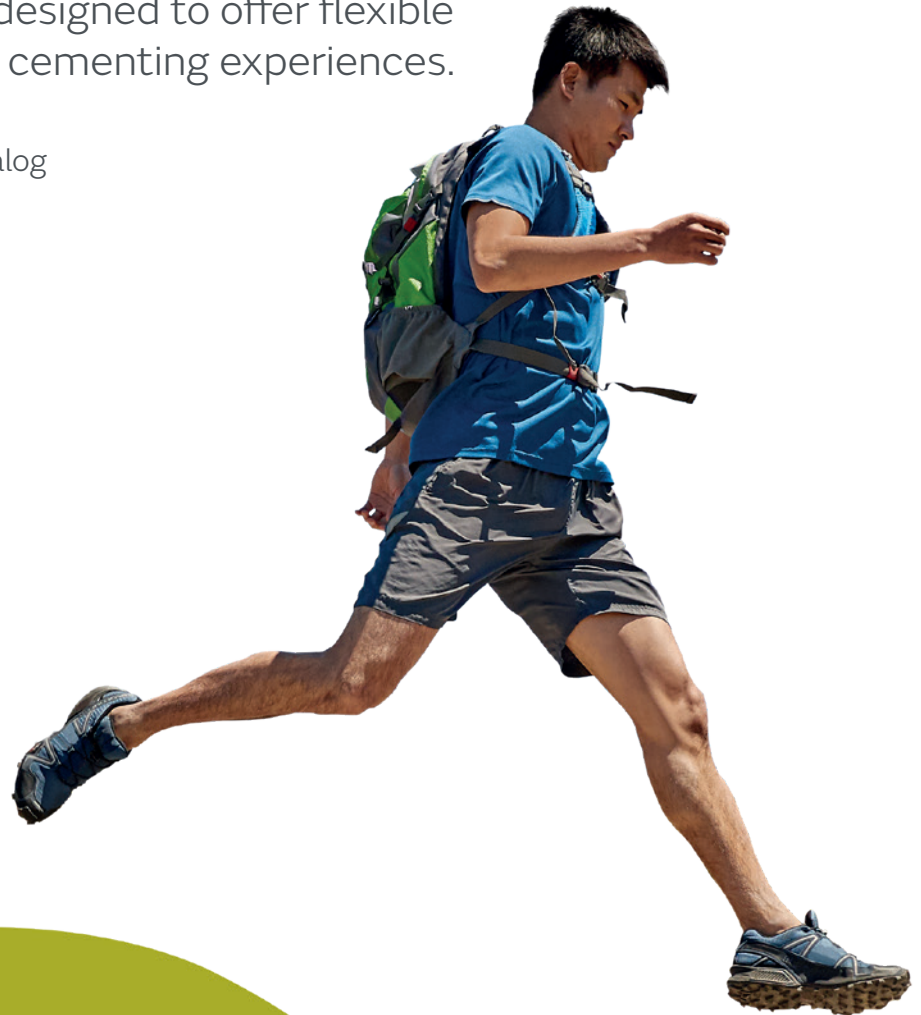
Summit Medical
Cement Accessories

Distributed by **Smith+Nephew**

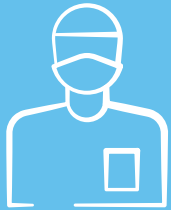
+ The perfect mix of flexibility and consistency

RALLY is a diverse portfolio of bone cement and accessory options designed to offer flexible solutions for consistent cementing experiences.

Bone Cement Accessories Catalog
and Specification Guide



The challenge



Orthopaedic Surgeons require a bone cement and accessories portfolio with versatile options to handle a variety of cases looking to achieve consistent outcomes.



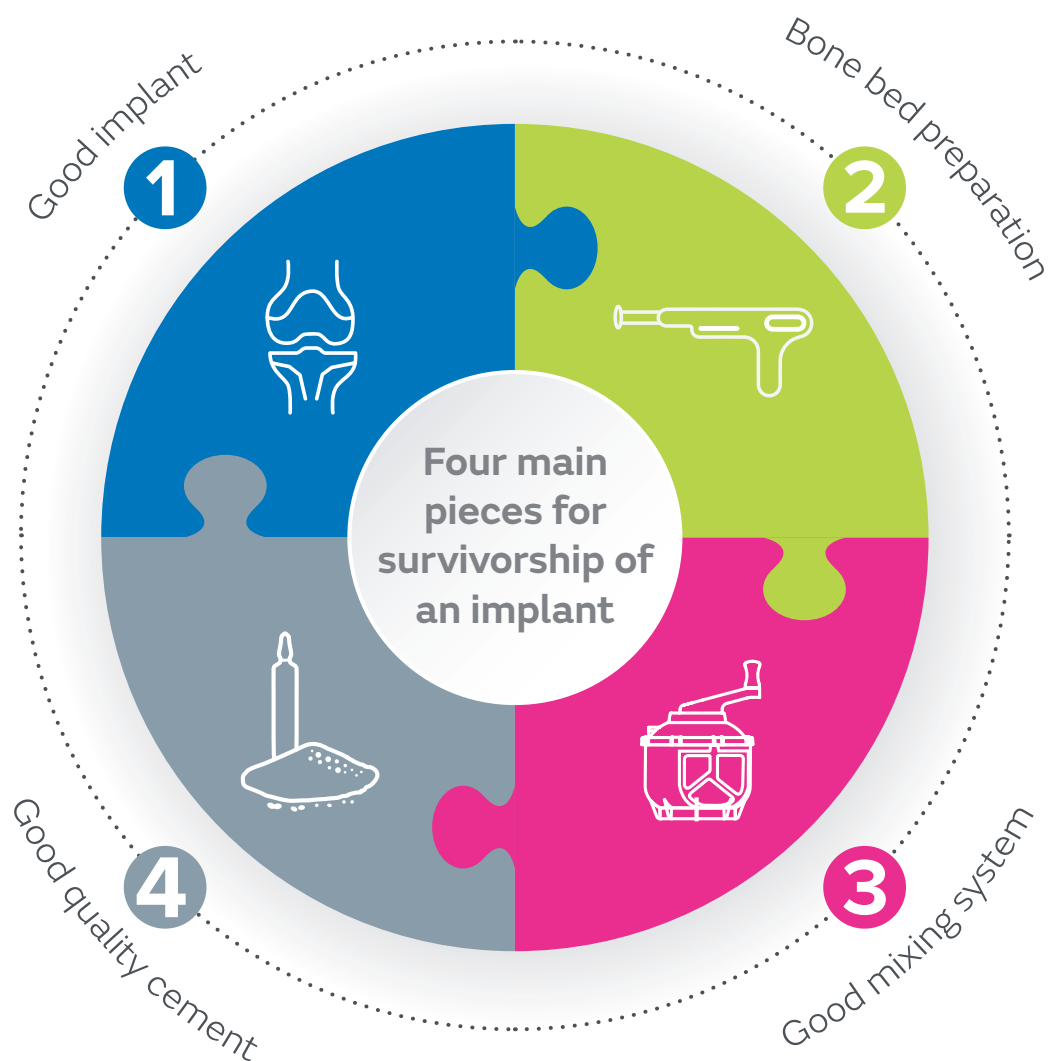
The solution

RALLY® Bone Cement

When you need a simple, comprehensive solution in the operating room, RALLY Bone Cement delivers. RALLY Bone Cement features options designed for reliability, visibility, and consistency to help achieve long-lasting implant survivorship for joint replacement procedures.

RALLY+Summit Medical Cement accessories

RALLY Bone Cement and Summit Medical Cement Accessories help simplify the OR experience when it comes to using mixing devices for bone cement. The goal and standard is to provide the best user experience by eliminating confusion with straight-forward techniques and mixing technology.



What is bone cement?

Bone cement is made from Polymethyl methacrylate (PMMA) which is usually supplied to hospitals in combination as a sachet of polymer powder and a glass ampoule of monomer liquid.

Bone cement mixing

When using bone cement in theatre it is important to understand the distinct phases that occur when the powder and liquid are mixed together, known as the polymerization process.

The polymerization process indicates to the user when the cement is ready to be placed and the length of time it then requires to set.

Although this process has four distinct phases, the length of each phase can vary from cement to cement. The four distinct phases are:



1. Mixing phase

The time to fully integrate the powder and liquid together.



2. Waiting phase

The time to achieve a suitable viscosity so that it can be handled without sticking to gloves. This time can be used to load the cement into the delivery device.




3. Working phase

The time during which the cement can be applied and the prosthesis implanted. The implant must be in place before the end of the working phase.



4. Setting phase

The time for the cement to harden and set completely.



Why do cements vary during the mixing process?

There are several factors that can contribute to the variation in behavior of bone cement seen during the polymerization process. A few of the factors include:

Composition – Can be influenced by the use of different copolymers, different powder-liquid ratio and the manufacturing or sterilization process of the cement.

Viscosity – High viscosity cement is relatively thick (dough like), and loses its stickiness quickly making the working phase longer whereas medium/low viscosity cement is more runny (liquid) and keeps its stickiness longer but has a shorter working phase.

Temperature – Higher temperatures within the OR speed up the process reducing the waiting phase and working time.¹

Humidity – Higher humidity accelerates all the phases of the polymerization process, whereas a dry atmosphere could lengthen the process.¹

RALLY All-in-One



RALLY[◇] Bone Cement offers surgeons flexibility and confidence in the operating room

Options for each surgeon's needs

- High viscosity
- Medium viscosity
- With Gentamicin
- Without Gentamicin
- 40g + 70g (All-in-One) size options

Reliability

- RALLY HV shows statistically higher compressive and bending strengths compared to Palacos[®] R²
- Long fatigue life and low porosity, even with hand-mixing²

Visibility

- Spearmint green color forms pigments for visibility
- Barium sulphate for radiopacity

Consistency

- Easy-to-mix, whether hand or vacuum mixing
- Smooth consistency from initial mixing to final implantation
- Unique All-in-One vacuum mixing device
 - 70g of cement components pre-loaded in a mixing and dispensing device



Let's RALLY[◇] together



Smith+Nephew has partnered with Summit Medical to offer unique mixing devices for any orthopedic surgical cementing scenario.

Summit Medical is a global orthopaedic leader in cementation options. Through decades of research and development, Summit products combined with Smith+Nephew resources offer healthcare professionals confidence and simplistic options in treating complex clinical challenges.

Heads up:

When ordering RALLY Accessories: **Always** order the amount needed based on the box quantities to ensure smoother transactions and inventory management.

MiniMix Syringe Set



RALLY Vacuum Bowl



Mixing systems

Summit Medical Mix In Syringe (with snap off nozzle)

Part Number: S727

Box Quantity: 10

Bone cement mixing + delivery

Mix In Syringe is a bone cement mixing and delivery device.

Mechanical mixing

Mechanically produces high quality mix of cement while reducing manual processing.³

Closed charcoal chamber

Featuring a closed system and charcoal filter allows for reduction in MMA fumes to levels below those set out in the HSE guidelines.⁴



Summit Medical Syringe Cement Gun

Part Number: H719

Box Quantity: 1

The Mix in Syringe delivery gun is a reusable device, composed of stainless steel and aluminum, for ejecting bone cement from a mixing/delivery syringe. Ratchet teeth allow the shaft to progress incrementally when the spring loaded trigger handle is pulled. The forward movement of the shaft forces the mixed bone cement to the opposite end of the delivery device and eventually out of the attached delivery nozzle.



Summit Medical MiniMix

Part Number: SMMM1

Box Quantity: 10

Bone cement mixing

MiniMix has been designed to mix 40g or less of PMMA bone cement, to support hip resurfacing, unicondylar knees, vertebroplasty, bone void filling and small joints procedures.

Rotational axis = Better mixing

MiniMix has a geared rotational axis mixing mechanism to ensure a high quality mix.⁵

Vacuum level of 550mmHg

Allows PMMA bone cement to be mixed at optimal levels to maximize the mechanical properties of the cement.^{6,7}

Transfer valve

8mm open bore transfer valve allows the mixed materials to be cleanly and precisely transferred into the delivery device or prosthesis.

200mm Catheter with 90 degree bend

Used with the delivery syringe, the catheter is ideal for vertebroplasty procedures, allowing the operator to inject the material whilst outside the X-ray field.



Summit Medical MiniMix Delivery Syringe

Part Number: SMDS1C

Box Quantity: 10

The delivery syringe can be pushed for quick ejection, or screwed for more accurate delivery. The syringe has a 10cc capacity, ideally suited to assist with vertebroplasty or small joint surgery.

Note: This delivery syringe is required when using the MiniMix.



Summit Medical Open Bowl with Spatula

Part Number: B710

Box Quantity: 30

The open cement mixing bowl is a sterile, single-use plastic open bowl for mixing up to 80g of bone cement. Featuring a pouring spout, spatula, and scraping edge to allow for minimal waste and control of excess cement.



RALLY^o Vacuum Mixing Bowl

Part Number: 71271801

Box Quantity: 20

RALLY Vacuum Mixing Bowl is a bone cement mixing device that uses a vacuum level of 550mmHg.

Rotational axis = Better mixing

The rotational axis design allows for higher quality mixing results in comparison to hand or fixed axis devices.⁷

Shaped spatula

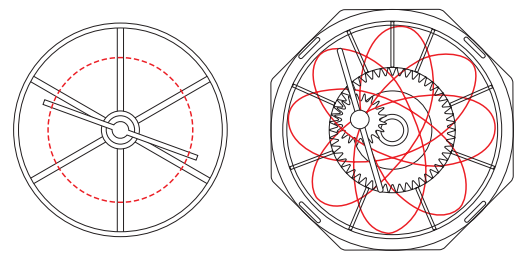
A specially designed spatula that precisely matches the bowl interior profile and helps minimize cement waste.

Visual mixing chamber

Offers a clear view of the cement during the mixing phase to view quality and composition prior to delivery.

High volume capacity

Bowl allows mixing of 40g to 120g of all types of cement.



Fixed Axis

Rotational Axis



Bone cement accessories

Summit Medical Pulsed Lavage

Part Number: WZ-WDS-01

Box Quantity: 5

Our **single-use** high pressure Pulsed Lavage system cleans bone and removes debris during total joint procedures. It is also a mechanical debridement system for cleaning wounds, removing dirt, necrotic tissue and debris.

Anatomy of the Pulsed Lavage:

- 1. Rocker switch**
Provides high and low pressure control for bone bed cleaning and soft tissue debridement
- 2. Tip locking mechanism**
Provides secure lock for attachments and tips
- 3. Separate suction and fluid tubes**
- 4. Lightweight ergonomic design**
For ease of use in a variety of procedures



Summit Medical Pulsed Lavage Femoral Brush

Part Number: WZ-PT-03

Box Quantity: 5

The Femoral Brush cleans bone and removes debris while drying the femoral canal.

Summit Medical Vacuum Foot Pump

Part Number: H550

Box Quantity: 1

The vacuum pump operates at a constant vacuum of 550mmHg and is used in conjunction with Summit Medical mixing devices only. To ensure the operator can see the vacuum is being applied, the foot pump has a vacuum dial to measure the vacuum being applied to the mixing system.



Summit Medical Spatula and Curette

Part Number: SC01

Box Quantity: 40

Single-use spatula and curette used to deliver and apply bone cement to the orthopaedic joint. Delivery of the bone cement to the application site is carried out by a spatula which is used to collect bone cement from the mixing bowl and place it on the joint.

The Curette is used to facilitate the final forming of the cement and the cleaning of the prosthesis by removing excess bone cement from the orthopaedic joint after insertion. The plastic Curette reduces the risk of scratching the implant.



Summit Medical Femoral Pressurizer

Part Number: P721

Box Quantity: 10

Suitable for all femur sizes and easy to fit, giving maximum convenience.



BUCK Cement Restrictor

The BUCK Cement Restrictor plugs the intramedullary canal and provides complete cement support of the femoral prosthesis. Both 18.5 and 25mm are part of the Prep-IM™ Kit, but 13, 30 and 35mm are available individually for more options.



Prep-IM™ Total Hip Preparation Kit

The Prep-IM Kit sets the standard in femoral preparation kits. It comes complete with the necessary tools and implants to clean the osteotomized femur and plug the intramedullary canal.

Includes the following:

- 2 BUCK Cement Restrictors
- 1 Femoral Canal Brush
- 1 BUCK Disposable Inserter
- Femoral Canal Suction Absorber
- 2 CONCISE™ Cement Sculps
- 1 Medium Femoral Pressurizer



Catalog information

Bone Cement

| Catalog Number | Description |
|----------------|--------------------------------------|
| 71271560 | RALLY® HV Bone Cement, 40 grams |
| 71271570 | RALLY HV AB Bone Cement, 40 grams |
| 71271580 | RALLY MV Bone Cement, 40 grams |
| 71271590 | RALLY MV AB Bone Cement, 40 grams |
| 71271600 | RALLY HV AB All-in-One, 70 grams |
| 71271605 | RALLY HV All-in-One System, 70 grams |
| 71271680 | RALLY MV AB All-in-One, 70 grams |
| 71271685 | RALLY MV All-in-One System, 70 grams |

Mixer Devices

| Catalog Number | Description |
|----------------|---|
| 71271801 | RALLY Vacuum Bowl |
| S727 | Summit Medical Mix In Syringe |
| SMMM1 | Summit Medical Minimix - Mixer |
| SMD51C | Summit Medical Minimix Delivery Syringe |
| B710 | Summit Medical Open Bowl With Spatula |

Cement Guns

| Catalog Number | Description |
|----------------|-----------------------------------|
| 71271610 | RALLY All-in-One Cement Gun |
| H719 | Summit Medical Syringe Cement Gun |

Pulse Lavage and Cement Accessories

| Catalog Number | Description |
|----------------|--|
| 110028 | Vent Opening Tool |
| 111000 | Concise Cement Sculps Kit |
| 110032 | Acetabular Brush |
| 890095 | RICHARDS Cement Hook |
| 110003 | Femoral Canal Brush, Standard, 19mm |
| 110028 | Vent Opening Tool |
| 110033 | Femoral Canal Brush, Narrow, 12.5mm |
| 110037 | Femoral Canal Suc Absorb, Standard |
| 110038 | Femoral Canal Suc Absorb, Large |
| WZ-WDS-01 | Summit Medical Pulsed Lavage |
| WZ-PT-03 | Summit Medical Pulsed Lavage Femoral Brush |
| H550 | Summit Medical Vacuum Foot Pump |
| SC01 | Summit Medical Spatula With Curette |

BUCK Cement Restrictors

| Catalog Number | Description |
|----------------|--------------------------------------|
| 112428 | BUCK Cement Restrictor Inserter |
| 129418 | BUCK Cement Restrictor, 18.5mm |
| 129419 | BUCK Femoral Cement Restrictor, 25mm |
| 71279420 | BUCK Cement Restrictor, 30mm |
| 71279421 | BUCK Cement Rest, 35mm |
| 71279422 | BUCK with Disp Insert, 18.5mm |
| 71279423 | BUCK with Disp Inserter, 25mm |
| 71279424 | BUCK with Disp Inserter, 30mm |
| 914535 | BUCK Cement Restrictor, 13mm |

Cement Pressurizer

| Catalog Number | Description |
|----------------|--|
| 111430 | Acetabular Cement Compressor |
| 111431 | Acetabular Compressor with Shd, Small, 54mm |
| 111432 | Acetabular Compressor with Shd, Medium, 62mm |
| 111433 | Acetabular Compressor with Shd, Large, 70mm |
| P721 | Summit Medical Femoral Pressuriser |
| 111434 | Femoral Cement Compressor |
| 111435 | Femoral Cement Compressor Cap |
| 120709 | Acet Cement Restrictor Pe, Large |

PREP-IM™ Enhance Total Hip Kit

| Catalog Number | Description |
|------------------|--|
| 12-1010 | PREP-IM Enhance Total Hip Kit |
| Includes: | |
| 12-9418 | BUCK Cement Restrictor, 18.5mm |
| 12-9419 | BUCK Cement Restrictor, 25mm |
| 11-2428 | BUCK Disposable Inserter |
| 11-0003 | Femoral Canal Brush, 19mm |
| 11-0037 | Femoral Canal Suction Absorber, Standard |
| 71270027 | Medium Femoral Pressurizer |
| 11-1000 | CONCISE™ Cement Sculpt |

Bone Cement Samples

| Catalog Number | Description |
|----------------|-----------------------------------|
| 71271700 | RALLY° HV Bone Cement Sample |
| 71271710 | RALLY MV Bone Cement Sample |
| 71271720 | RALLY HV All-in-One System Sample |
| 71271730 | RALLY MV All-in-One System Sample |

Products may not be available in all markets because product availability is subject to the regulatory and/or medical practices in individual markets. Please contact your Smith+Nephew representative or distributor if you have questions about the availability of Smith+Nephew products in your area.

Smith & Nephew, Inc.
1450 Brooks Road
Memphis, Tennessee 38116
USA

www.smith-nephew.com

°Trademark of Smith+Nephew
All Trademarks acknowledged
©2022 Smith+Nephew
33679 V1 07/22

References

1. Yoon JR, Ko RK, Shin YS. Effect of shape on bone cement polymerization time in knee joint replacement surgery. *Medicine*. 2018;97(17):1-5. **2.** Tecres Data on file. **3.** Eveleigh R, Dunne N, Orr J, Mushipe M, Beverland D. The fatigue life of bone cement: how it is affected by mixer design, vacuum level and user technique. *Journal of Advanced Perioperative Care*. 2002;1(1):12-6. **4.** Summit TR223: A comparison of fume levels using 4 cement systems. Vapour Management Systems, Plymouth, UK. **5.** Kurdy NMG, Hodgkinson JP, Haynes R. Acrylic bone-cement: influence of mixer design and unmixed powder. *J Arthroplasty*. 1996;11(7):813-819. **6.** Dunne NJ, Orr JF, Mushipe MT, Eveleigh RJ. The relationship between porosity and fatigue characteristics of bone cement. *Biomaterials*. 2003;24:238-245. **7.** Dunne NJ, and Orr JF, 2001. The effects of porosity on acrylic bone cement shrinkage after polymerisation. European Society for Biomaterials 2001 Conference, 12th/14th Sep, London, UK.